

Kerfab
ATTACH+GO

WastePro Range



Kerfab
ATTACH+GO

+ 1800 818 079 + www.kerfab.com.au + sales@kerfab.com



**Innovation through
teamwork**

About the *WastePro* Range

The launch of the WastePro Range is Kerfab's response to an ever growing but demanding industry where productivity is critical and down time must be prevented at all costs.

'Innovation through teamwork' is what we live by and our engineering and customer service staff have teamed up with machine manufacturers and the waste industry to develop the only range of attachments made specifically for the unique demands of the waste industry.



Minimise Downtime

Kerfab's BackUp+ program offers a 2 year warranty and a team in each state to service attachments, replace wear parts, and provide back up if needed.



Maximise Productivity

As each attachment is designed and built for your specific needs you can be sure your attachment will allow your team to be it's most productive



Optimise Performance

Each attachment is engineered to suit your machine to optimise fuel consumption, lifting capacity, and machine utilisation.

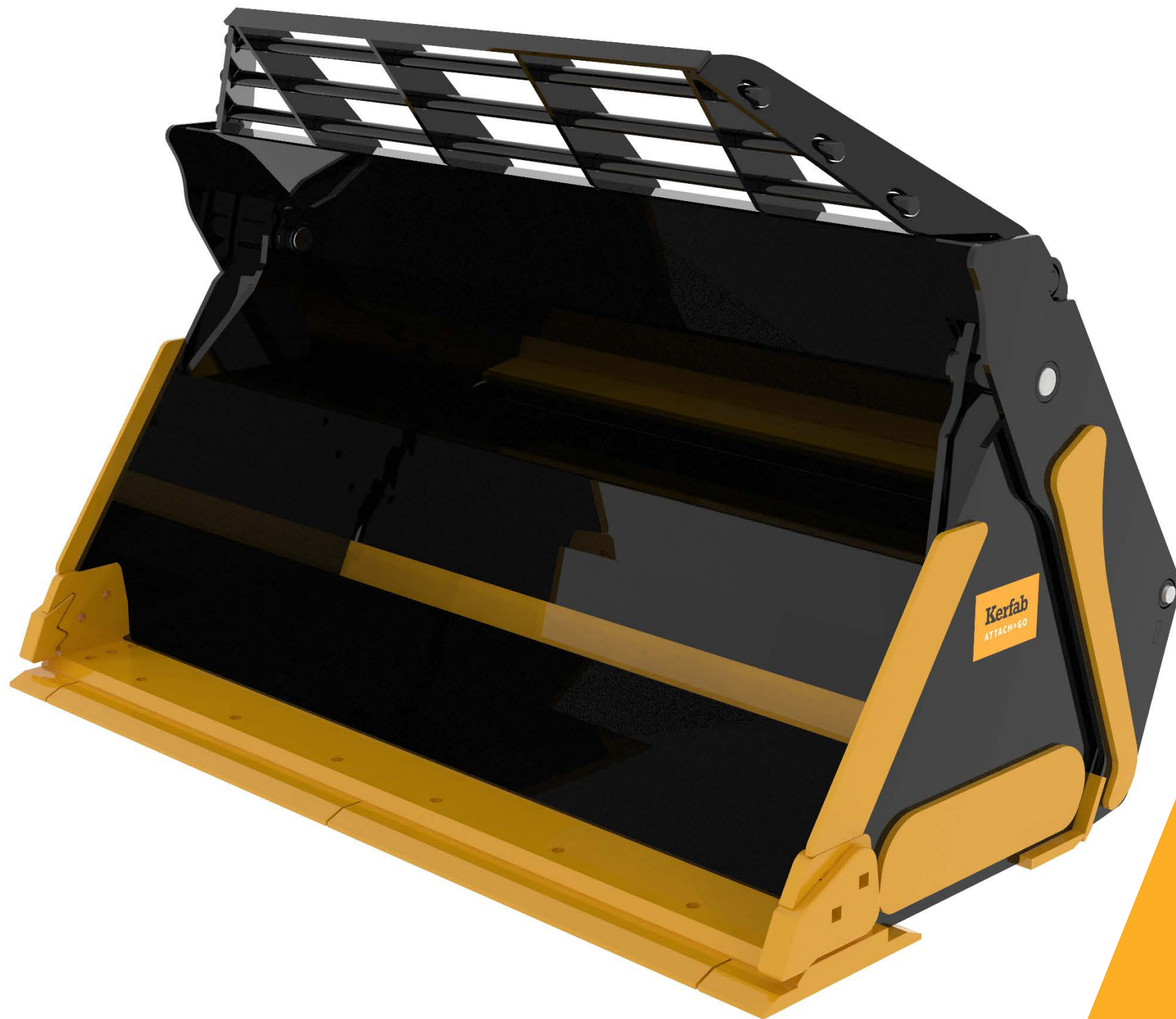


CONTENTS

- 6 **HEAVY DUTY** 4-IN-1 BUCKET
- 8 **HIGH CAPACITY** WASTE BUCKET
- 10 **HEAVY DUTY** HIGH DUMP BUCKET
- 12 **HEAVY DUTY REHANDLING**
BUCKET
- 14 **LIGHT MATERIALS** BUCKET
- 16 **WASTE** BUCKET GRAPPLE
- 18 **HEAVY DUTY** WASTE GRAPPLE
- 20 **MULTIPURPOSE** GRAB
- 22 **OTHER** ATTACHMENTS

HEAVY DUTY 4-IN-1 BUCKET

WastePro Range **7**



HEAVY DUTY 4-IN-1 BUCKET

4 in 1 Buckets are the most versatile attachment for the majority of waste handling applications. As the name suggests, this bucket is capable of multiple tasks including:

- + Normal bucket use
- + Grabbing/clamping
- + Pushing material like a dozer blade
- + Emptying from the centre, effectively extending the reach of the machine
- + Backblading and leveling

The versatility of this bucket makes it ideal for waste transfer stations or other applications where materials of different shapes and sizes are often handled. Larger items can be picked up between the jaws, rubble can be pushed into piles with the blade, and smaller materials can be scooped like an ordinary bucket.

Common Uses:

- + Co-mingled waste
- + Large/bulky items
- + Mixed Recyclables
- + Cardboard/Paper



+ 4 in 1 Bucket in use at Toowoomba
Shire Council's waste transfer station

HIGH CAPACITY WASTE BUCKET

HIGH CAPACITY WASTE BUCKET

The **WastePro** High Capacity Waste Bucket is designed solely to handle bulk quantities of various types of waste.

Each waste stream requires a slightly different design to ensure optimum performance and longevity but generally all High Capacity Waste Buckets share a few design features. These include:

- + Trash guard to prevent spills and protect the hitch
- + Internal liners to prolong life of bucket
- + Bolt on edge and heel plates
- + Optional rubber cutting edge

Each High Capacity Waste Bucket is purpose built for each machine and application it will be used in. All buckets of this style come with strengthened internal stiffeners. These stiffeners increase the life of the bucket and are vital in high use applications like the waste management industry.

Common Uses:

- + Glass
- + Green Waste
- + Co-mingled waste
- + Mulch



+ A High Capacity Waste Bucket on a Liebherr L550 at a Cleanaway facility in WA.

HEAVY DUTY HIGH DUMP BUCKET

HEAVY DUTY HIGH DUMP BUCKET

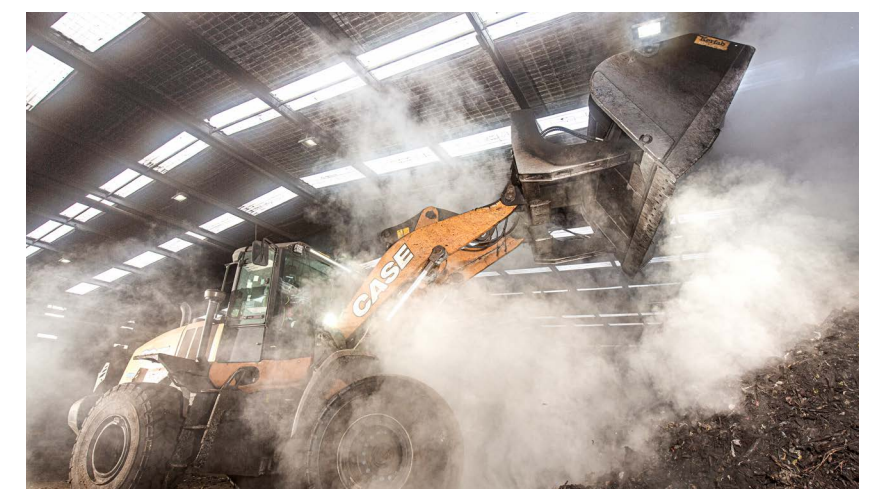
A High Dump Bucket increases the height a loader can unload from. The bucket pivots on its front lip thanks to two powerful rams built into the bucket. This allows the bucket to tip over walls, high sided trucks, and other tall structures/objects.

This bucket can be fitted with a trash guard to protect the hitch and rams behind the bucket. The placement of the rams can also be adjusted depending on application. A bucket with internal rams is pictured opposite, the rams can also be placed on the outer sides of the bucket. The design of this bucket reduces the amount of areas where materials can get stuck to.

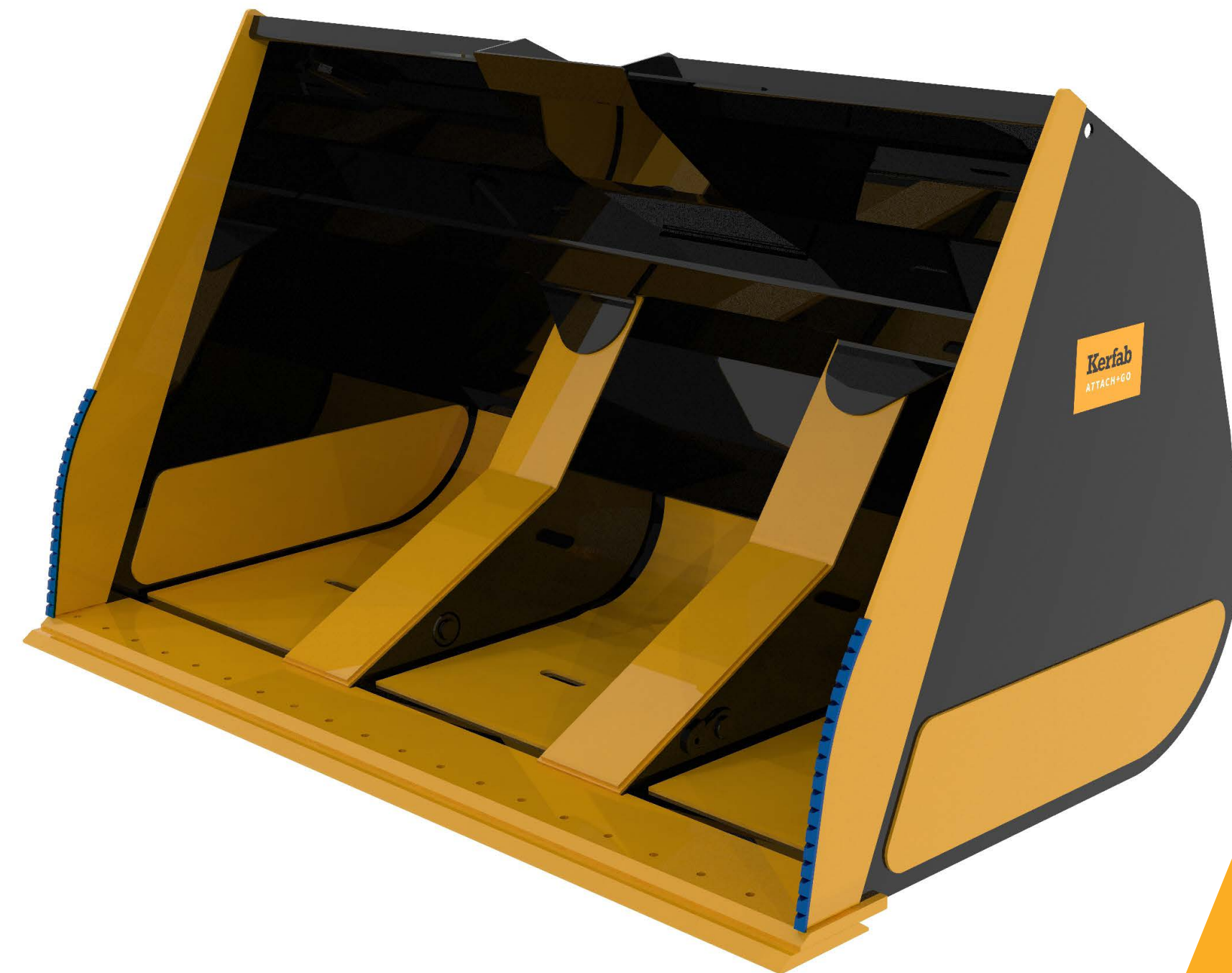
The **WastePro** High Dump Bucket is perfect for handling dense and abrasive material. The large capacity of these buckets helps to improve efficiency. This bucket can be built for multiple waste management applications.

Common Uses:

- + Mixed Recyclables
- + Green Waste
- + Plastic Bottles



+ A High Dump Bucket demonstrating its capability at Jeffries in SA.



HEAVY DUTY REHANDLING BUCKET

WastePro Range

13



REHANDLING BUCKET

The **WastePro** Rehandling Bucket is designed for high volume use. It's often used where multiple types of materials are handled such as comingled waste, recyclables (including glass), organic waste, putrescible waste, and more.

Depending on what material is being handled, this style of bucket can come complete with various design features, including:

- + Trash Guard/Rack
- + Internal Wear Liners
- + Multiple cutting edge configurations
- + External wear pack

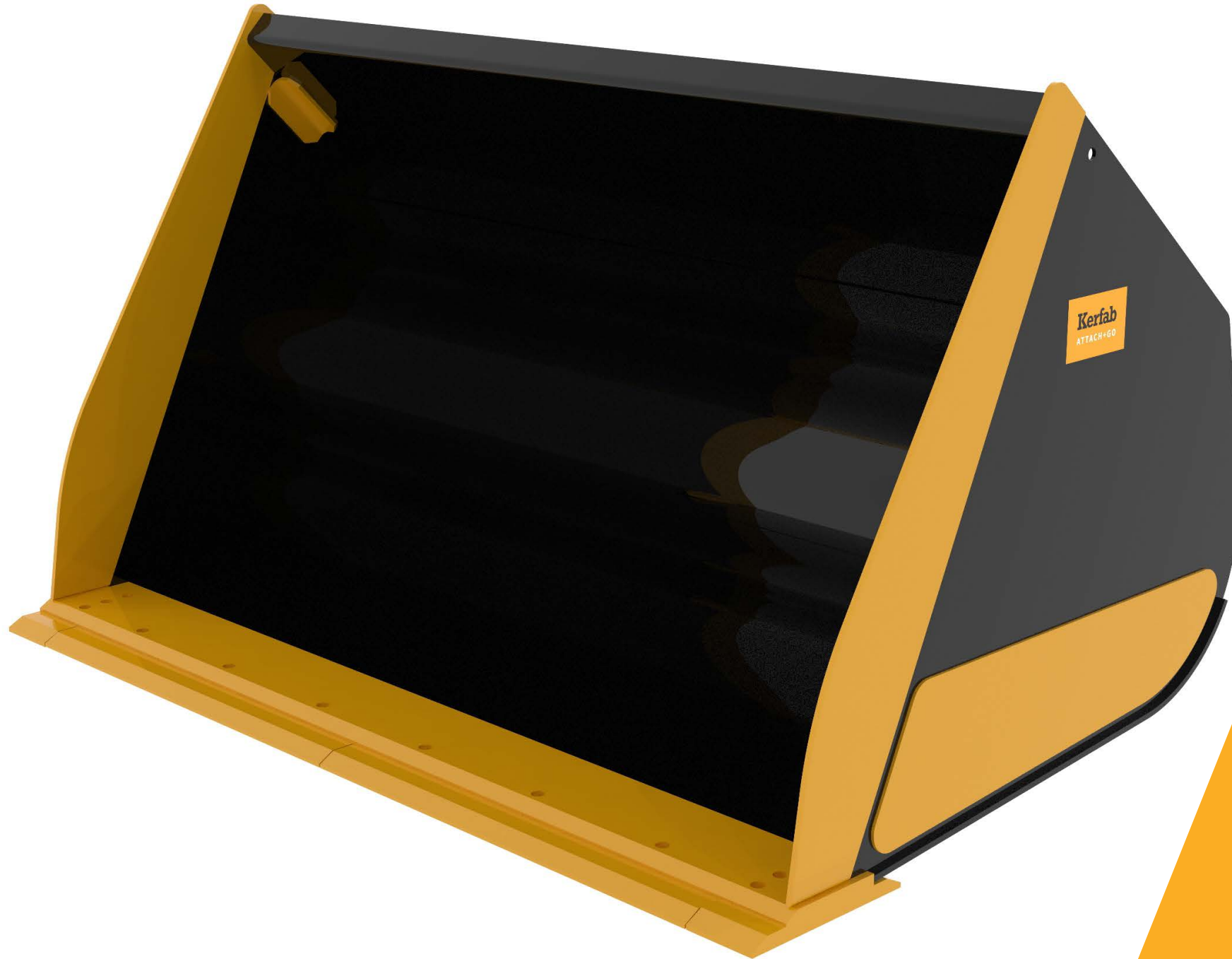
Common Uses:

- + Mixed Recyclables
- + Recycled Batteries
- + Crushed Glass
- + Scrap Steel



+ Heavy Duty Rehandling Bucket at Visy's South Australian Depot

LIGHT MATERIALS *BUCKET*



LIGHT MATERIALS *BUCKET*

The Light Materials Bucket is a high capacity bucket designed specifically for low density and less abrasive materials.

Utilising lighter materials, this bucket is built to maximise capacity. It is generally only suited for materials under 1000kg/m³ as the bucket is not designed to handle dense, abrasive material.

The bucket's main purpose is to maximise the loaders lifting capacity, sacrificing the weight of the bucket to allow for more material to be carried.

This bucket is often used in recycling plants to handle plastic bottles, cardboard, and other low density materials. The WastePro model will often come with a 'trash guard' (pictured below). This prevents material spilling behind the bucket while still maintaining excellent visibility.

Common Uses:

- + Plastic Bottles
- + Cardboard
- + Paper
- + Feathers
- + Sawdust



+ A WastePro Light Materials Bucket in action at a Remondis facility in NSW on a Caterpillar IT38G

CLARE VALLEY WASTE

Clare Valley Waste operates a full Multi Recovery Facility located in Brinkworth, South Australia. Clare Valley Waste prides itself on efficient practises that will create a cleaner environment in South Australia.

Paul Mills, GM of Clare Valley Waste, approached Kerfab in late June 2019. Paul already had a Kerfab bucket and a Kerfab bucket grapple in use at the same facility so when the time came for a new attachment he knew who to call.

“We needed an attachment to perform a specific job and Kerfab built an attachment that did that perfectly,” he said.

“This grab has opened up a whole new line of work for us as we are now able to load a lot more things with it. We currently service about 7 transfer stations plus our own recycling centre.”

“We load scrap steel with it, we load putrescible waste, we load commercial and industrial waste, and we load cardboard with it. The transfer stations range from scrap steel to hard timber, hard waste, and general waste.

“This bucket has opened up a whole range of things we can load with it and it’s improved our business by giving us a lot more range.”

Kerfab supplied a 2.4m wide Heavy Duty Waste Bucket Grapple with a capacity of 2.1m³. The grapple function allows the bucket to move massive amounts of material while keeping the size of the attachment down as well as ensuring all material stays secure and does not fall out.



HEAVY DUTY WASTE GRAPPLE



HEAVY DUTY WASTE GRAPPLE

The Heavy Duty Waste Bucket Grapple combines the ability to carry large loads of smaller items as well as larger, bulkier items that would not normally fit in a bucket.

This versatility makes it ideal for waste transfer stations where different kinds of waste will need to be handled. Traditional buckets often struggle to handle large and irregularly shaped loads, the grapple ensures these loads are held securely

The grapple also increases capacity when handling lighter materials, this is useful for handling paper, plastic bottles, cardboard, etc.

This Bucket Grapple comes equipped with multiple clamp configurations. This is vital for the intense workload and high stress a bucket grapple is placed under in many waste management applications.

- Common Uses:
- + Large items
 - + Loads of varying shapes
 - + Mixed waste



+ Heavy Duty Waste Grapple in use at Clare Valley Waste

MULTIPURPOSE GRAB



MULTIPURPOSE GRAB

The Multipurpose Grab utilises high tensile steel and powerful rams to clamp with even pressure. This allows the grab to safely and securely lift, carry, and transport the required material.

The grab can be optioned with either hardened or soft tines which have been engineered in consultation with the waste management industry. The soft tines prevent the build up of waste and refuse on the grab tines. Hardened tines are ideal for scrap metal applications.

The Multipurpose Grab is often found in applications where the material is not easily handled by a bucket. This grab has been proven to massively increase efficiency carrying organic waste (such as for composting).

Such applications include:

- + Organic Waste
- + Green Waste
- + Bulky Items
- + Scrap Steel



+ A Multipurpose grab in action at Adelaide Mushrooms composting facility.



QUICK HITCHES



ACTISWEEP MEGABRUSH



WK-60 LOADER SCALES



SKIP BIN COMPACTOR



EXCAVATOR GRAPPLE



GP PALLET FORK

CUSTOM ATTACHMENTS

One of the biggest advantages in working with Kerfab is our ability and expertise in designing and building bespoke attachments.

Our engineering team maintain a library of engineering drawings, measurements, and specifications of nearly every machine on the market. This combined with our experience building attachments in the waste industry allows us to manufacture and attachment that both Kerfab and our customers can be confident in.

Our “Innovation through teamwork” motto means we build custom attachments in consultation with our customers, our suppliers, machine manufacturers, and machinery dealers.

It’s this expertise which keeps customers coming back to Kerfab. From the unforgiving Pilbara region, to the frozen Antarctic continent, Kerfab attachments are performing in some of the world’s harshest conditions.

