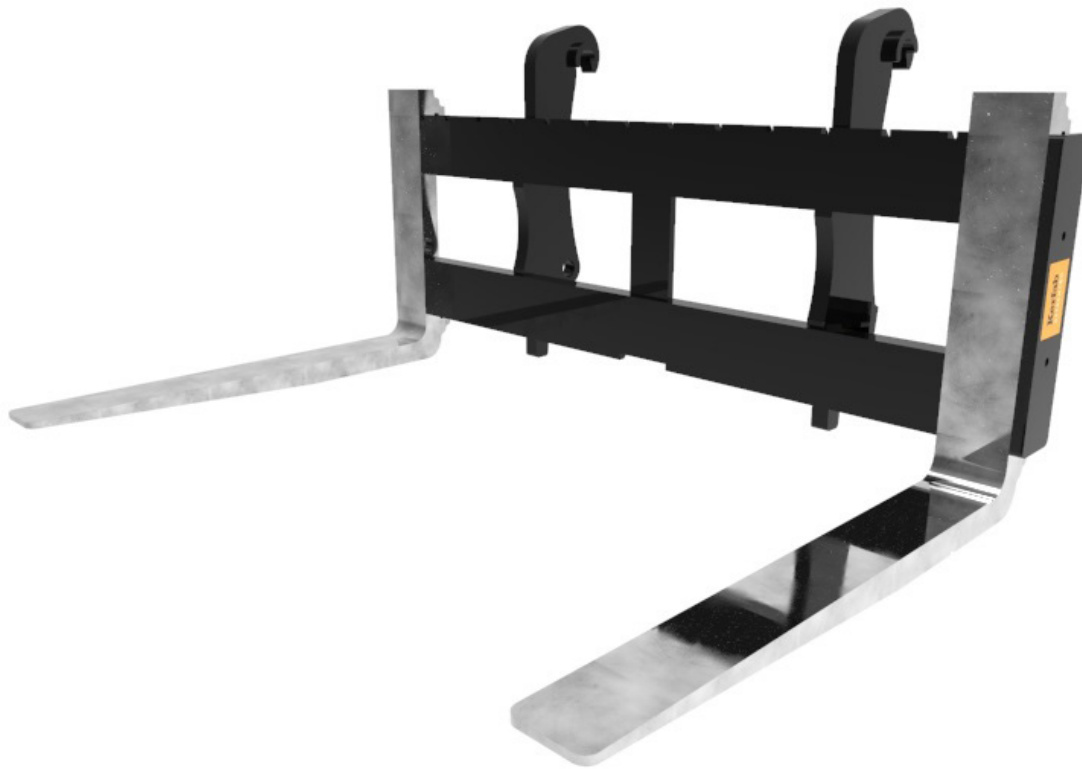


Operation Manual

Clearview Pallet Fork



Dear valued customer, we kindly ask that you carefully review the operating manual for your product and complete the product registration process to ensure that you are eligible for warranty coverage. Thank you for taking the time to follow these important steps to protect your investment.



+ 1800 818 079

+ kerfab.com.au

+ sales@kerfab.com

Kerfab
ATTACH+GO

CONTENTS

INTRODUCTION	2
OWNER INFORMATION	2
GENERAL INFORMATION	3
PLANT ASSESSMENT	4
CLEARVIEW PALLET FORK FEATURES	4
RISK ASSESSMENT AND CONTROL	5
WORKSITE SAFETY	6
MAINTENANCE INSPECTIONS	6
SPARE PARTS	7
OPERATING INSTRUCTIONS	8
PRODUCT REGISTRATION	12
KERFAB WARRANTY STATEMENT	13





INTRODUCTION

Kerfab is a specialist manufacturer of a comprehensive range of attachments covering a wide spectrum of market sectors. The Clearview Pallet Fork you have purchased is just one of a vast range of purpose-built products available in our range. Each attachment is engineered to relevant codes and standards along with input from experienced team which in turn provides you with an optimum item which will provide you with many years of service.

OWNER INFORMATION

Thank you for choosing to purchase a Clearview Pallet Fork from Kerfab. To ensure maximum performance, it is mandatory that you study this operation manual to ensure your equipment continues to operate to maximum performance. Proper operation and maintenance are essential to prevent injury or damage and to maximise attachment life.

Continuous improvement is at the forefront of the Kerfab culture meaning that changes in product design may not be reflected in this document. Great care has been taken in preparing this document with accuracy however Kerfab does not assume any liability for errors or omissions.

	Potentially Fatal Danger
	Risk of Serious Injury
	Risk of Material Damage and/or Minor Injury
	Maintenance operation or Information

GENERAL INFORMATION

This operation manual was written to provide the owner/ operator instructions on the safe operation and maintenance of the Clearview Pallet Fork Attachment.

PLEASE READ AND UNDERSTAND THE OPERATION AND MAINTENANCE OF YOUR CLEARVIEW PALLET FORK BEFORE OPERATING YOU KERFAB ATTACHMENT.

Kerfab Clearview Pallet Forks are used on Wheel Loaders therefore this manual is a permanent part of your machine.

Attachment Inspection

All delivered products by Kerfab should be initially checked for any defects, damages or missing parts to ensure performance of attachment upon taking delivery of item.



Please notify Kerfab with a report of any problems within 10 business days.

Vital Point

Please keep this manual with the Machine once the attachment has been installed on the machine. The Operator should have a full understanding of full use of this attachment before use.

Attachment Features

The Kerfab Clearview Pallet Fork is designed specifically for wheel loaders and can be custom built to suit any application. It easily lifts pallets, logs, pipes, general freight and fruit bins with a single machine. Kerfab's line-up of different sizes, offers lifting capacities ranging from 1500kg to 8000kg with different tine lengths, ensuring that you will find a model to suit your specific needs. A quick hitch is the ideal companion for a wheel loader with a pallet fork. It allows the machine to quickly switch between the fork and any other attachment.

Plant Assessment

NB. This Plant Assessment ONLY applies to the attachment named below. It DOES NOT extend to other item(s) of plant that are used to operate this attachment

Plant Type:

Clearview Pallet Fork

Specifications:

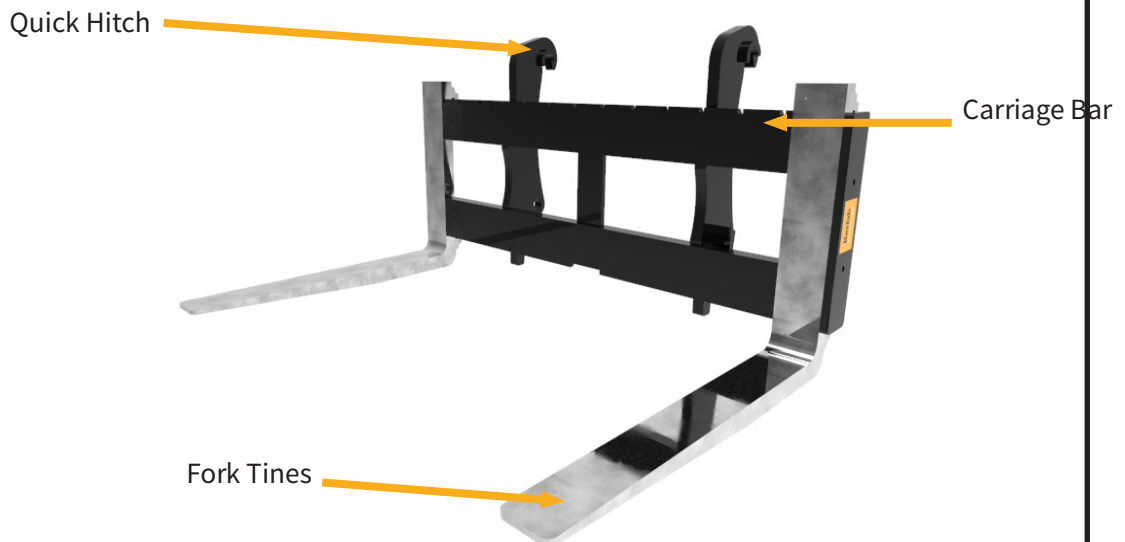
Refer to the Identification Plate on the Clearview Pallet Fork for the specifications relevant to this attachment. The loads carried by the Fork should NEVER EXCEED THE LOAD LIMIT OF THE FLOATING PALLET FORK OR THE LOAD LIMIT OF THE MOBILE PLANT it is attached to a Wheel loader, in the full scope of each mobile plant's operations.

Description of Use:

Clearview Pallet forks have a wide range of uses for both construction and agriculture material handling. The Clearview pallet forks attach to the front of the wheel loader where the operator can lift, lower, or move a pallet. If installed and maintained properly, it should provide years of service in a rugged environment.



Clearview Pallet Fork Features



Risk Assessment and Control



Body parts can be crushed between the mobile plant and Clearview Pallet Fork attachment when connecting to the mobile plant mount.

Keep hands and body parts clear of the area between ClearviewPallet Fork attachment points and mobile plant mount.



Body parts may be jammed between the forks and carriage bar as forks are being positioned.

Keep all body parts clear when personnel are moving the forks along the carriage bar into the desired position.



Body parts can be crushed if Clearview Pallet Forks are unexpectedly released from the mobile plant mount quick hitch.

Ensure the Clearview Pallet Forks are securely attached to the attachment prior to use including fully engaging locking pins. Regularly check that hitch points on the fork positioner and mount parts are in good condition.



Body parts can be crushed when the floating pallet fork is in operation or maintenance is being performed and the pallet fork remains attached to the primary machine.





Keep body parts clear of the carriage bar when the loader is tilting/crowding (especially during maintenance).

Worksite Safety



- All people involved in the operation are to wear appropriate personal protective equipment which may include eye protection, hearing protection, gloves, protective footwear, and high visibility clothing/vests.
- Clearview Pallet Forks should **ONLY** be operated by a trained and experienced operator or an operator under direct supervision.
- Person/s should **NOT** enter the work area or sweep the area of attachment and load unless under the direction of the operator.
- **NEVER** walk under the Clearview Pallet forks or load.
- **NEVER** elevate Clearview Pallet Forks or load above or in direct proximity to people.
- Ensure all persons are clear of Clearview Pallet Forks when it is being hitched or released.

Maintenance Inspections

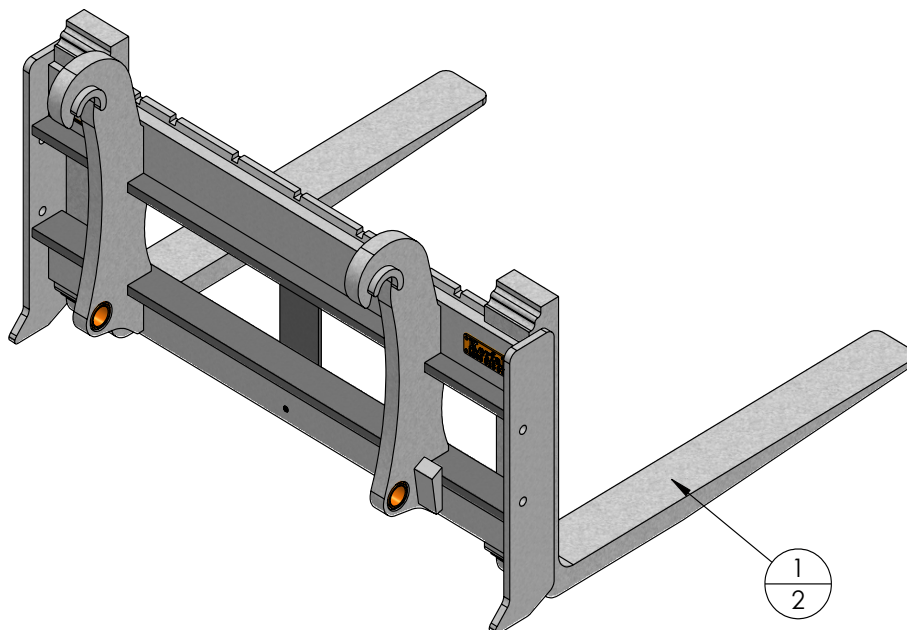
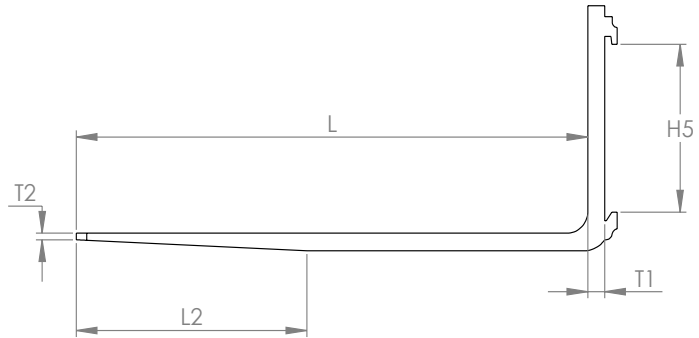
	Check hitch points and locking bolts for wear and damage.	
	Check all welds for damage or cracks.	
	Check the guide bar and cradle bushes for excessive wear, damage, or rust.	
	Check fork tines and carriage bar and quick hitch brackets for wear and distortions.	

DO NOT USE THE CLEARVIEW PALLET FORKS IF WEAR OR DAMAGE MAKES THE USE OF THE CLEARVIEW PALLET FORKS HAZARDOUS

SPARE PARTS

Tine Measurements:

Tine Lengths:	
	1220
	1530
	1070
	2130
	2440
	1830



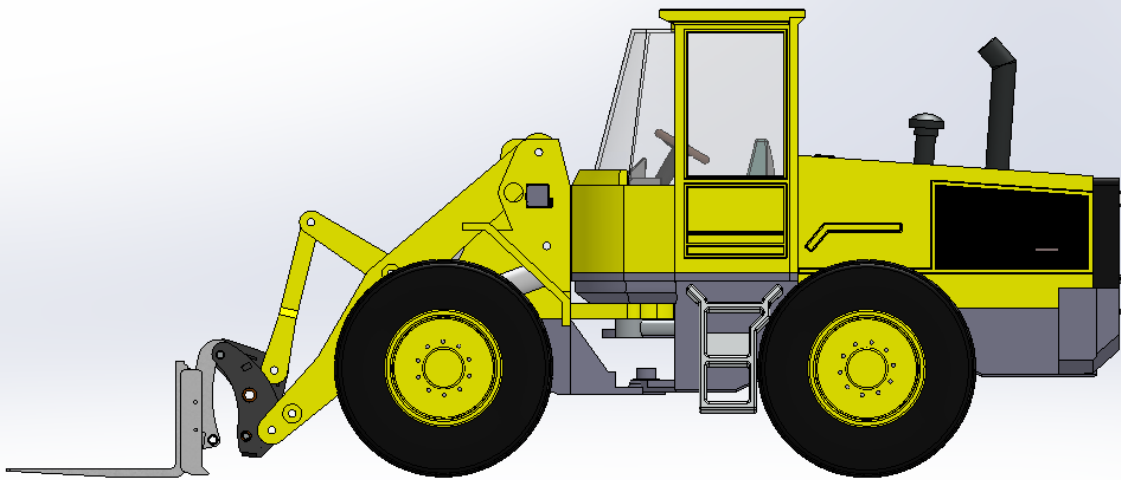
NO.	DESCRIPTION	QTY
1	TINES	2

OPERATING INSTRUCTIONS

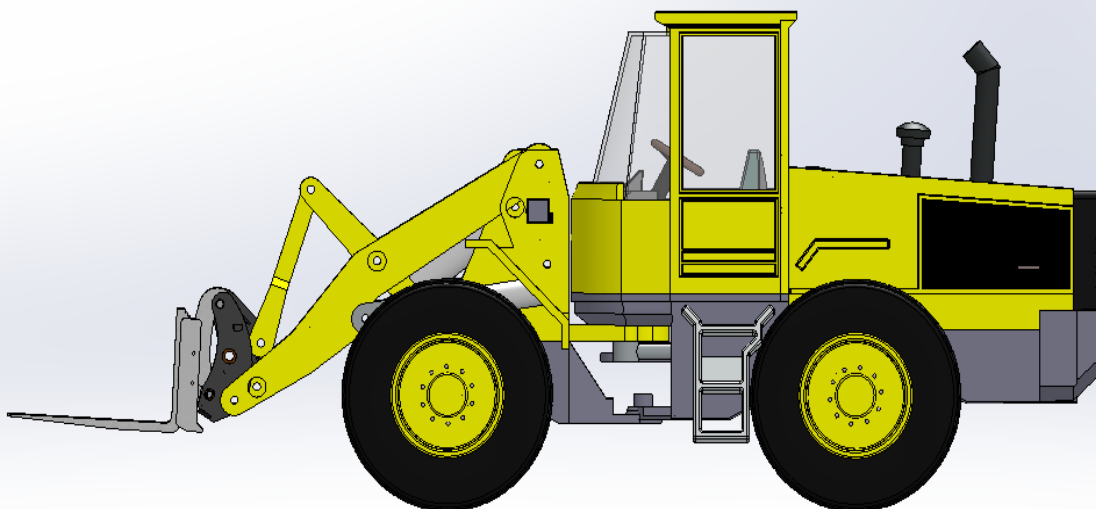
ENGAGING IMPLEMENT STEPS

STEP 1

Approach the Clearview Pallet Fork with top pick-up bar in sight and aligned with quick hitch hooks.

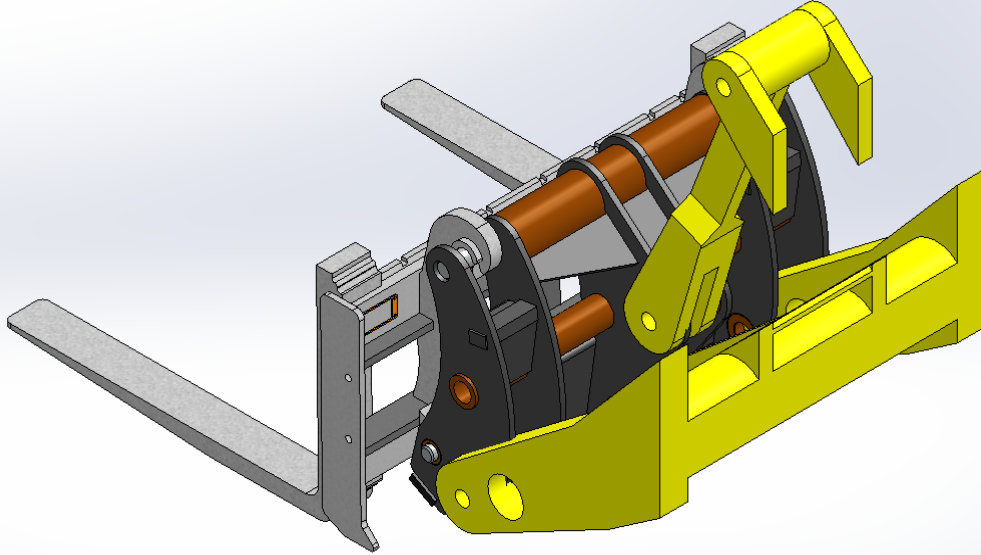
**STEP 2**

Engage top bar with hook by raising loader arms. Roll the Clearview Pallet Fork back to ensure hook stopper is resting against the coupler. Engage quick coupler locking pins.

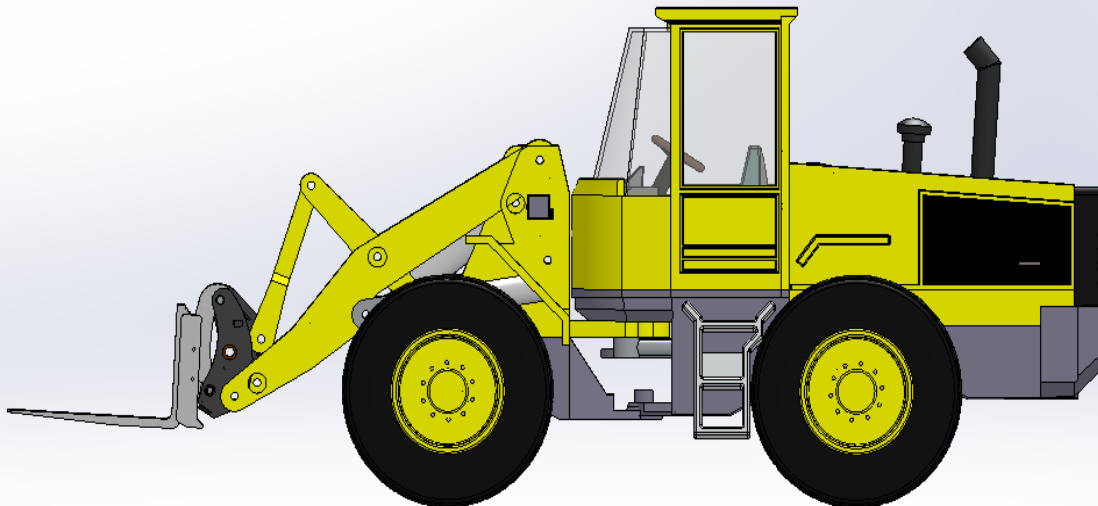


STEP 3

Check that locking pins are engaged by view indicators. Note: Models with no indicators will require a physical check by the operator

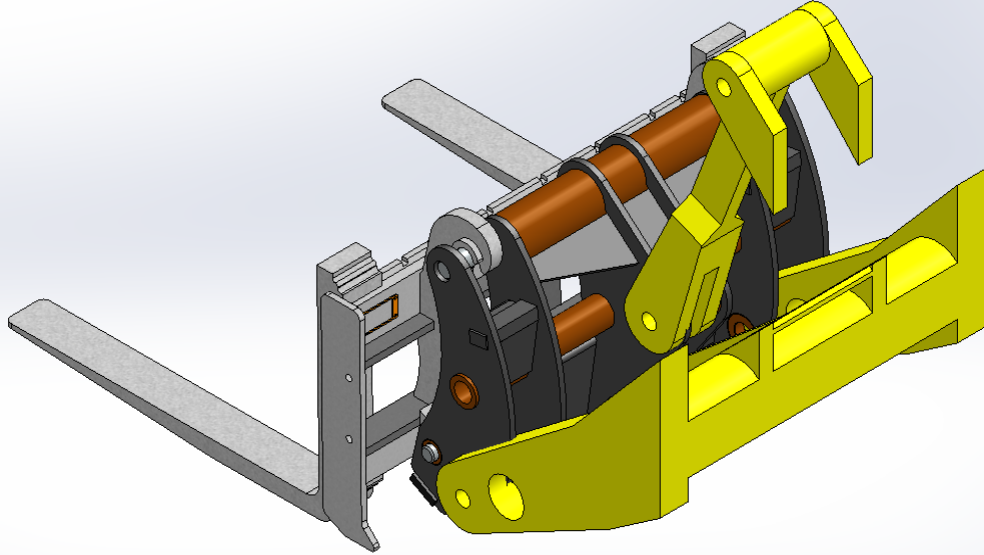
**DISENGAGING IMPLEMENT STEPS****STEP 1**

Slightly roll back implement to ensure hook bump stops are resting against the quick coupler. Disengage locking pins.

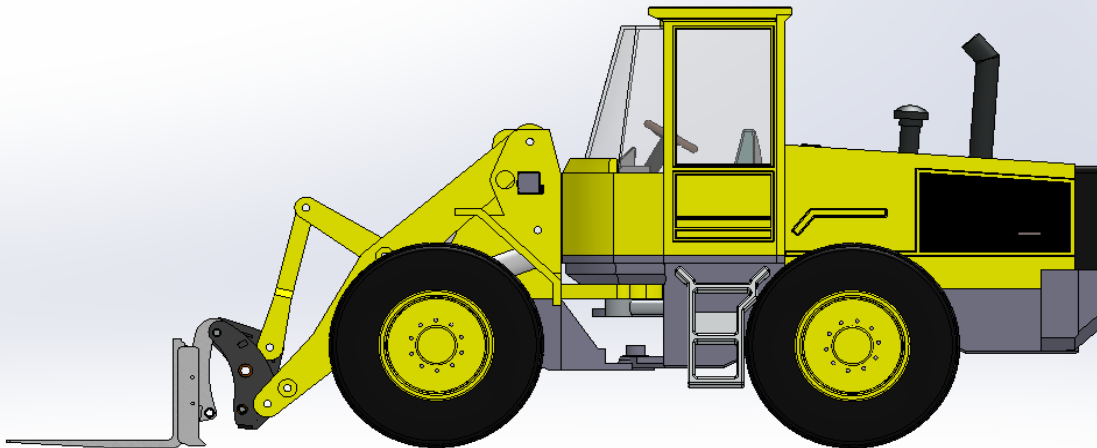


STEP 2

Check that locking pins are disengaged. Note: Models without indicators may need a physical check by the operator.

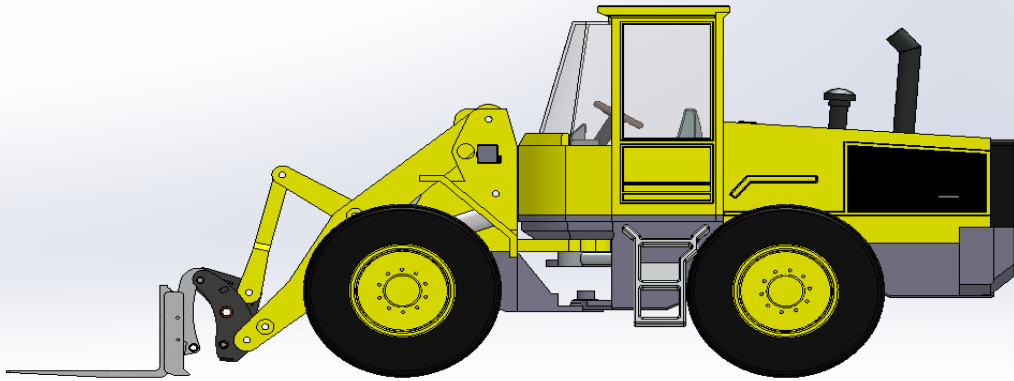
**STEP 3**

Slightly roll coupler forward to rest front of the Clearview Pallet Fork on the ground as shown.

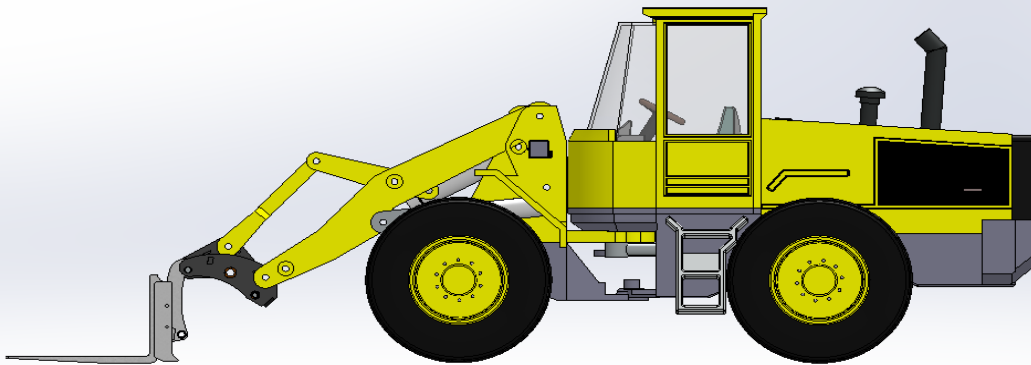


STEP 4

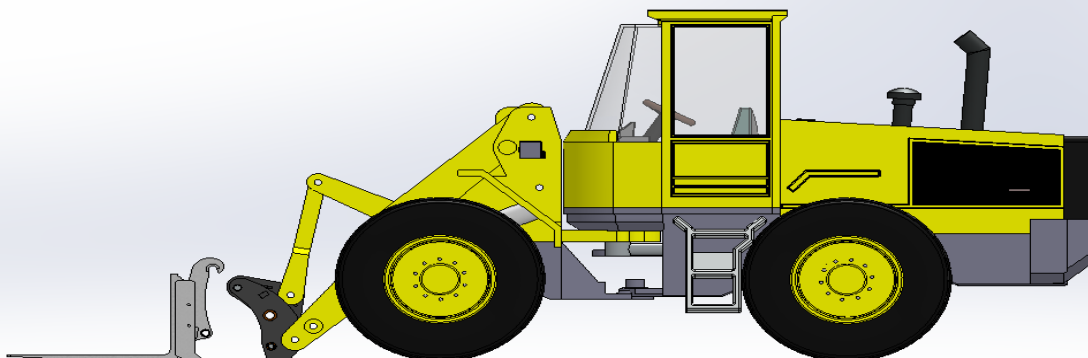
Lower loader arms until top pick-up bar becomes disengaged from quick coupler hooks



WARNING: NEVER ROLL COUPLER OVER AS SHOWN BEFORE DISENGAGING. *This will cause damage to attachment*

**STEP 5**

Reverse away from the Clearview Pallet Fork.



Product Registration

Date of Delivery:	
Name:	
Company:	
Street Address:	
Phone Number:	
E-mail Address:	
Model Number:	
Serial Number:	
Sales Order Number:	

I confirm that the operator has read and understands the Operating Instruction and Warranty Terms and acknowledges this by signing the below.

X

DATE:/...../.....



Please email a completed copy to warranty@kerfab.com within 10 days of receipt of the Clearview Pallet Fork.

KERFAB WARRANTY STATEMENT

At Kerfab Industries, we take pride in delivering materials handling products that meet and exceed the highest industry standards. Our commitment to quality ensures that our products are engineered to conform to the stringent Australian Standards, providing customers with robust and reliable solutions for their needs. We stand behind the quality of our products and offer the following warranty provisions:

Warranty Terms:

- (1)** Kerfab warrants that our products shall be free from defects in material or workmanship for a period of **24 months** from the date of delivery to the purchasing customer.
- (2)** At our sole discretion, Kerfab may choose to replace or repair the product or any defective part thereof.
- (3)** This warranty is exclusively for the benefit of the named original customer and cannot be transferred or assigned.
- (4)** The warranty applies only to Kerfab products fitted or installed by Kerfab or our approved installers.
- (5)** Travel costs associated with assessing or repairing a Kerfab product covered under this manufacturer's warranty are not included.

Customer Responsibilities:

This warranty is subject to and conditional upon the strict compliance of our customers with the following responsibilities:

- (1)** Customers must notify Kerfab as soon as possible of any claims or circumstances that may give rise to a claim.
- (2)** Customers must provide Kerfab with details of the claim, along with any other information reasonably required to evaluate the claim.
- (3)** The product should not be used once a defect is apparent.
- (4)** It will be the customers financial responsibility to cover freight to return the attachment / component for assessment. Any claims that are then deemed warrantable the freight cost will be reimbursed.
- (5)** Repairs or attempts to repair the defect by any other party without prior written approval from Kerfab are not allowed.

Warranty Exclusions:

Not everything is covered by this warranty. The following exclusions apply:

- (1)** Mechanical failures due to a failure to comply with the service requirements as specified.
- (2)** Repairs required because of continued operation of the item once a defect or fault has occurred, including the loss of lubricants and coolant that results in consequential damage to associated components or systems.

(3) Consequential damage as a result of hydraulic fluid contamination to other components or system related ancillaries. This is not specific to but includes pumps, hoses, fittings, cylinders, valves and reservoirs.

(4) Damage resulting from impacts or road traffic accidents.

(5) Kerfab Industries are not responsible for any impact to business or financial loss due to the failure of an attachment or component.

This includes but it not limited to:

- personal liability
- work contract or agreement
- revenue or profit
- production
- increase to a business overhead cost

(6) Claims where damage to a covered component was caused by a non-covered component.

(7) Mechanical failures caused by misuse, neglect, abuse, negligence, lack of normal maintenance, improper servicing, or incorrect operation of the item as per the operations guide as determined by the Kerfab warranty administrator / supervisor.

(8) Ground Engaging Tools – Cutting Edge, Bucket Wraps, Teeth, Adapters

(9) Chassis and Wearing Components – Bruising on Coupler Chassis, Pins, Bush & Bearing wear, Spring Tensions or components considered a “wear and tear” item.

(10) Claims attributable to failure to follow the manufacturer’s operating guidelines or exceeding the manufacturer’s operating limitations.

(11) Claims where Kerfab has not been contacted before the commencement of repairs or repairs initiated without a Kerfab-issued work authorization number.

(12) Claims where the repair has not been performed by Kerfab, unless specifically authorised by Kerfab before the claim.

(13) Mechanical failures arising from unauthorised repairs.

(14) Mechanical failures attributed to modifications unless the modification has been endorsed by Kerfab in writing. Modified components must be disclosed in your warranty application and are expressly excluded from coverage.

(15) Failures caused by corrosion, electrolysis, fertiliser or rust.

(16) Tapping’s, threads, and fixing/fastening devices.

(17) Mechanical failures caused by a fault existing before the commencement of coverage.

(18) Use of the product for a purpose not specifically designed or intended by the manufacturer.

At Kerfab Industries, we are dedicated to providing you, with high-quality load handling products and support. This warranty statement reflects our commitment to ensuring your satisfaction and peace of mind from our dedicated aftersales team.