

Operation Manual

Fixed Lifting Jib



Dear valued customer, we kindly ask that you carefully review the operating manual for your product and complete the product registration process to ensure that you are eligible for warranty coverage. Thank you for taking the time to follow these important steps to protect your investment.



+ 1800 818 079

+ kerfab.com.au

+ sales@kerfab.com

Kerfab
ATTACH+GO

CONTENTS

INTRODUCTION	2
OWNER INFORMATION	2
GENERAL INFORMATION	3
PLANT ASSESSMENT	4
FIXED LIFTING JIB FEATURES	4
RISK ASSESSMENT AND CONTROL	5
WORKSITE SAFETY	6
OPERATIONAL AND SAFETY PROCEDURES	7
MAINTENANCE	8
ATTACH TO MACHINE	8
CERTIFICATE OF COMPLIANCE	8
SPARE PARTS	9
OPERATING INSTRUCTIONS	10
PRODUCT REGISTRATION	14
KERFAB WARRANTY STATEMENT	15





INTRODUCTION

Kerfab is a specialist manufacturer of a comprehensive range of attachments covering a wide spectrum of market sectors. The Fixed Lifting Jib you have purchased is just one of a vast range of purpose-built products available in our range. Each attachment is engineered to relevant codes and standards along with input from experienced team which in turn provides you with an optimum item which will provide you with many years of service.

OWNER INFORMATION

Thank you for choosing to purchase a Fixed Lifting Jib from Kerfab. To ensure maximum performance, it is mandatory that you study this operation manual to ensure your equipment continues to operate to maximum performance. Proper operation and maintenance are essential to prevent injury or damage and to maximise attachment life.

Continuous improvement is at the forefront of the Kerfab culture meaning that changes in product design may not be reflected in this document. Great care has been taken in preparing this document with accuracy however Kerfab does not assume any liability for errors or omissions.

	Potentially Fatal Danger
	Risk of Serious Injury
	Risk of Material Damage and/or Minor Injury
	Maintenance operation or Information

GENERAL INFORMATION

This operation manual was written to provide the owner/ operator instructions on the safe operation and maintenance of the Fixed Lifting Jib Attachment.

PLEASE READ AND UNDERSTAND THE OPERATION AND MAINTENANCE OF YOUR FIXED LIFTING JIB BEFORE OPERATING YOUR KERFAB ATTACHMENT.

Kerfab Fixed Lifting Jib are used on Wheel Loaders, Telehandlers and Agricultural Tractors therefore this manual is a permanent part of your machine.

Attachment Inspection



All delivered products by Kerfab should be initially checked for any defects, damages or missing parts to ensure performance of attachment upon taking delivery of item.

Please notify Kerfab with a report of any problems within 10 business days.

Vital Point

Please keep this manual with the Machine once the attachment has been installed on the machine. The Operator should have a full understanding of full use of this attachment before use.

Attachment Features

The Kerfab Fixed Lifting Jib is a safe and efficient way of transporting objects. It is more cost-effective compared to the extendable version and is ideal for handling loads that are bulky or have unusual dimensions. The fixed lifting jib has quality rated swivel hooks to allow flexibility of rotation for better manoeuvrability and access.

Plant Assessment

NB. This Plant Assessment ONLY applies to the attachment named below. It DOES NOT extend to other item(s) of plant that are used to operate this attachment

Plant Type: Fixed Lifting Jib

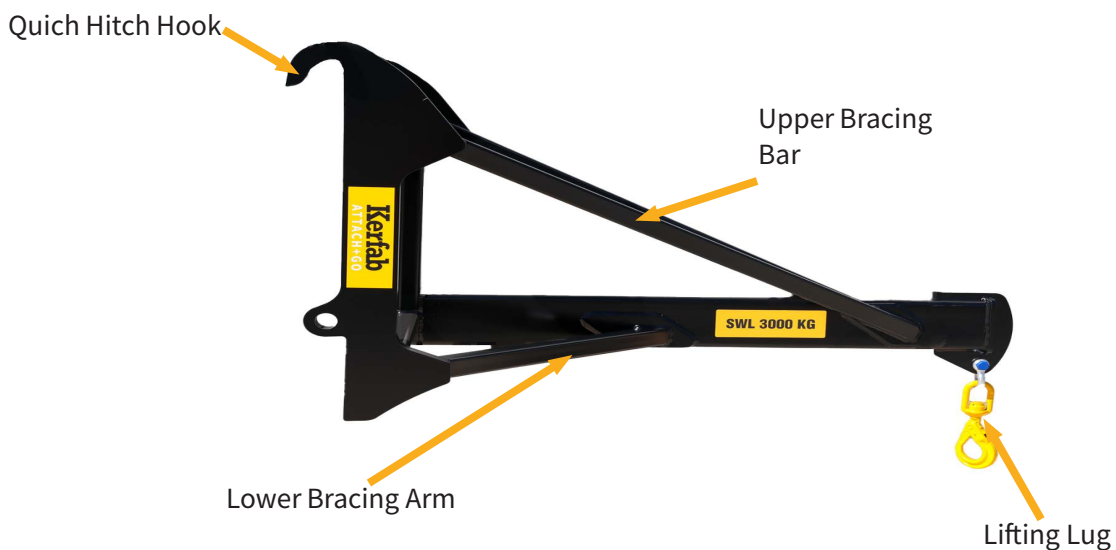
Specifications:

Refer to the Identification Plate on the Lifting Jib for the specifications relevant to this attachment. The loads carried by the Lifting Jib should NEVER EXCEED THE LOAD LIMIT OF THE LIFTING JIB OR THE LOAD LIMIT OF THE MOBILE PLANT it is attached to eg. front end loader, wheel loader, in the full scope of each mobile plant’s operations.













Description of Use:

The Lifting Jib is a lifting attachment for front-end loaders and wheel loaders. The Lifting Jib is designed to lift a variety of items using chains or slings attached to the lug of the lifting jib by shackles or hooks.

Fixed Lifting Jib Features



Risk Assessment and Control

Symbol	Risk	Control
 	<p>Body parts can be crushed between the mobile plant and Lifting Jib attachment points when connecting the Quick Coupler to the mobile plant mount.</p>	<p>Keep hands and body parts clear of the area between Lifting Jib attachment points and mobile plant mount.</p>
 	<p>Fingers may be jammed in locking pin points as locking pins are engaged.</p>	<p>Keep fingers clear when engaging locking pins into locking pin points at rear of Lifting Jib.</p>
 	<p>Shackles, hooks, chains, or slings can crush body parts as the weight of the load being lifted is taken up.</p>	<p>Keep hands and body parts clear of lifting lug, shackles, hooks, chains, or slings as the load is lifted.</p>
 	<p>Body parts can be crushed if the Lifting Jib unexpectedly releases attachment from the mobile plant mount.</p>	<p>Ensure the Lifting Jib is securely attached to the attachment prior to use including fully engaging locking pins. Regularly check that hitch points on the Lifting Jib and also mount parts are in good condition.</p>
 	<p>Hands and body parts can be crushed between the quick coupler and machine mounting arms.</p>	<p>Keep body parts clear of the coupler when the loader is tilting/crowding (especially during maintenance).</p>
 	<p>Body parts can be crushed by unexpected release or movement of load.</p>	<p>Ensure the load is correctly slung, secure, and balanced to avoid sudden movement when lifted. Take care when lifting loads that are difficult to secure or balance. Regularly check Lifting Jib for damaged or bent/distorted parts and damaged welds.</p>
 	<p>Body parts can be crushed by unexpected tipping of the Lifting Jib.</p>	<p>Ensure the Lifting Jib is stable when released from the mobile plant mount. Use stable chocks to support lifting lug and support arm if necessary.</p>

Worksite Safety



- All people involved in the operation are to wear appropriate personal protective equipment which may include eye protection, hearing protection, gloves, protective footwear, and high visibility clothing/vests.
- Lifting Jib should **ONLY** be operated by a trained and experienced operator or an operator under direct supervision.
- Person/s should **NOT** enter the work area or sweep the area of attachment and load unless under the direction of the operator.
- **NEVER** walk under the Lifting Jib or load.
- **NEVER** elevate Lifting Jib or load above or in the direct proximity to people.
- Ensure all persons are clear of Lifting Jib when it is being hitched or released.
- Ensure loads are secure and stable prior to release from Lifting Jib to avoid load moving after release.



WARNING

The Rated capacity stated on this attachment is the structural capacity only of the lifting attachment.

Refer to the lift/load chart in machine to determine actual lifting capacity of this attachment once mounted to the telehandler or loader.

Operational and Safety Procedures

- Ensure that the machine safety capacity is not exceeded.
- Ensure the operator has read and understands all safety aspects relating to the use of the jib attachment. Refer to the Plant Risk Assessment pg. 5
- Dynamic loads are introduced when handling suspended loads. If sudden stops and starts occur this will cause the load to swing and create a safety hazard.
- The attachment can alter load centres and reduce load capacity. Consideration must be given to operating conditions and the types of loads to determine the actual working capacity for every application. The rated load for the machine jib attachment rating must not be exceeded.
- When lifting with a jib attachment the net weight should not exceed 75% of the tipping load when stationary and 50% of the tipping load in a pick and carry situation in accordance with AS1418.8 – 2008.
- Any rated capacity on the attachment is a structural rating of the attachment only and makes no claim to the stability of the machine. Actual load may need to be restricted to the suitability of the capacities which must be obtained from the machine manufacturer.
- Kerfab Attachments shall not be modified in any way without the prior consent of Kerfab Industries.
- Quick attached lifting jibs are designed and manufactured in accordance with AS1418.8 – 2008, AS1418.1 – 2002, and AS4772 – 2008 as required. The use of the word Wheel Loader tool carrier in this document is referred to as per definitions in AS 1418.8 – 2008. Earth-Moving Machinery as referred to in AS4772 – 2008
- Please refer to the lifting jib ID Plaque for load capacity

MANUFACTURED BY		11 TATE DRIVE KERANG VICTORIA 3579 PHONE: (03) 5450 3092 FAX: (03) 5450 4458 EMAIL: sales@kerfab.com	
			
ABN 72 431 961 425			
MODEL		S/N	YEAR
IMPLEMENT WEIGHT	kg	SWL	kg
LOST LOAD	mm	HORIZONTAL CENTRE OF GRAVITY	mm
LOAD CENTRE	mm	VERTICAL CENTRE OF GRAVITY	mm

Attach to Machine




The following information should be added to the rated capacity chart in accordance with AS1418.8 – 2008.

- Type of attachment.
- Rated Capacity as authorized by the Wheel Loader manufacturer.

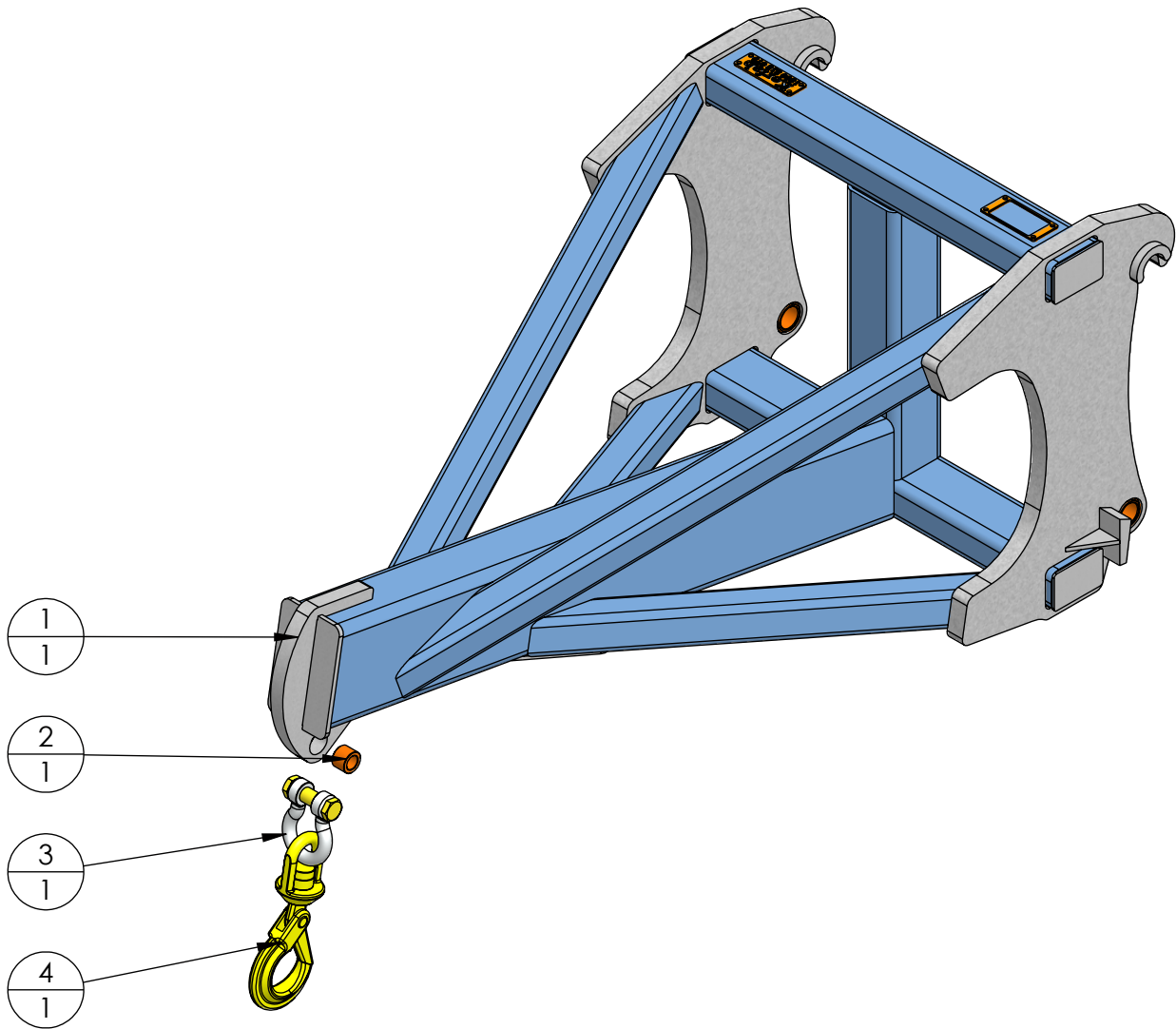
Certificate of Compliance

We certify that all Kerfab Industries Tool Carrier Jib Attachments are rated to the capacity shown on their Compliance Plaque and are designed and manufactured in accordance with the following Australian Standards;

AS 1418.1 – 2002	Cranes, Hoists and Winches – General Requirements
AS 1418.8 – 2008	Cranes, Hoists and Winches – Special Purpose Applications
AS 1418.19 – 2007	Cranes, Hoists and Winches – Telescopic Handlers
AS/NZS 1554.1:2001	Structural Steel Welding – Welding of Steel Structures
AS 2550.1 – 2011	Cranes, Hoists and Winches – Safe Use – General Requirements
AS 2550.19 – 2007	Cranes, Hoists and Winches – Safe Use – Telescopic Handlers
AS 4772 – 2008	Earth-Moving Machinery – Quick hitches for Excavators and Backhoe Loaders

Maintenance		
	Check hitch points for wear and damage.	
	Check the lifting lug, support arm, bracing bars, and rear frame for damage or bends/distortions.	
	Check all welds for damage or cracks.	
DO NOT USE THE LIFTING JIB IF WEAR OR DAMAGE MAKES THE USE OF THE LIFTING JIB HAZARDOUS		

SPARE PARTS



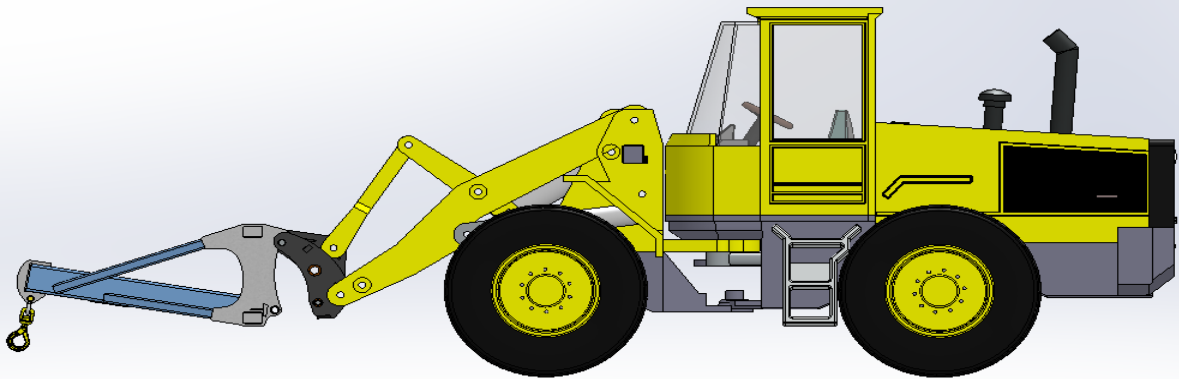
NO.	DESCRIPTION	QTY
1	JIB NOSE	1
2	MOD# LL6	1
3	SAFETY BOW SHACKLE	1
4	SWIVEL HOOK	1

OPERATING INSTRUCTIONS

ENGAGING IMPLEMENT STEPS

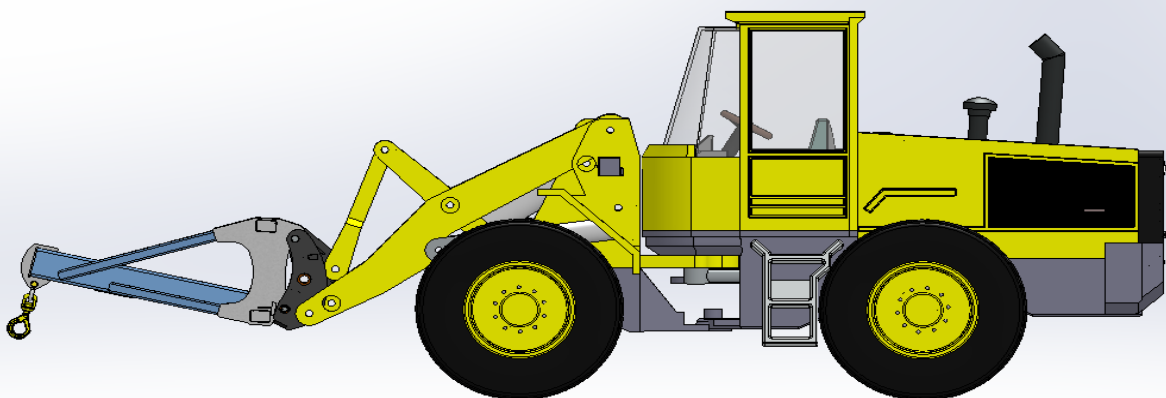
STEP 1

Approach Lifting Jib with top pick-up bar in sight and aligned with quick hitch hooks.



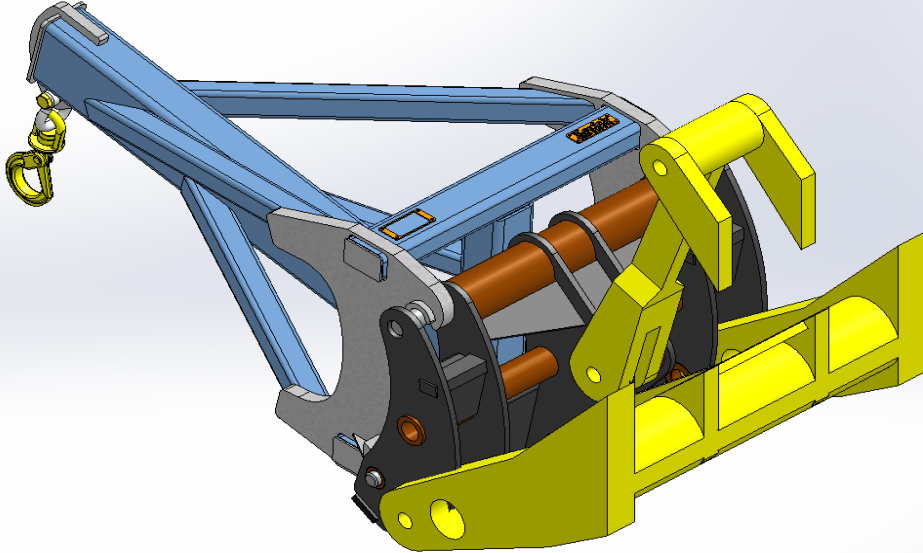
STEP 2

Engage top bar with hook by raising loader arms. Roll the Lifting Jib back to ensure hook stopper is resting against the coupler. Engage quick coupler locking pins.

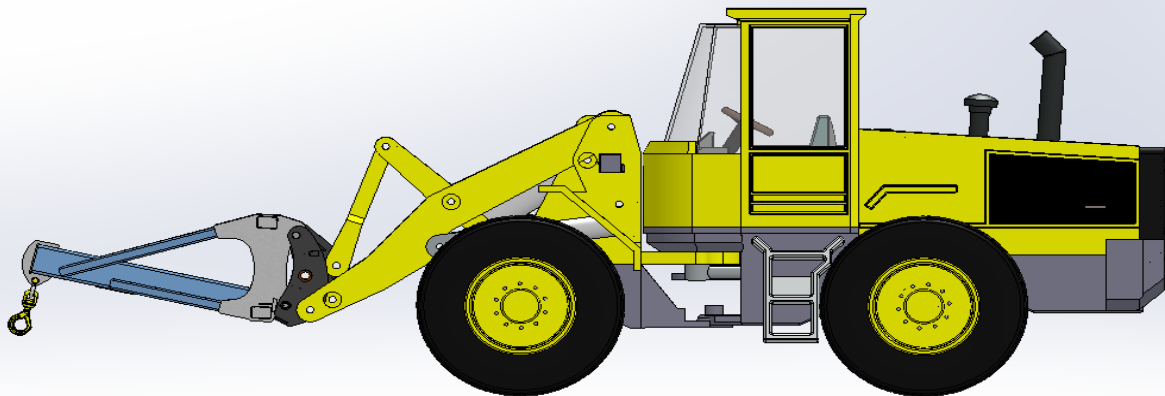


STEP 3

Check that locking pins are engaged by view indicators. Note: Models with no indicators will require a physical check by the operator

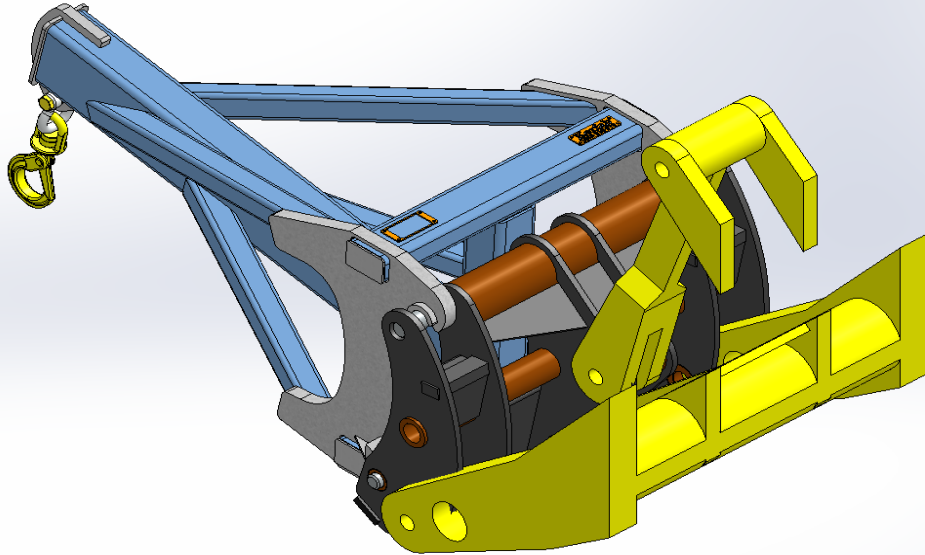
**DISENGAGING IMPLEMENT STEPS****STEP 1**

Slightly roll back implement to ensure hook bump stops are resting against the quick coupler. Disengage locking pins.

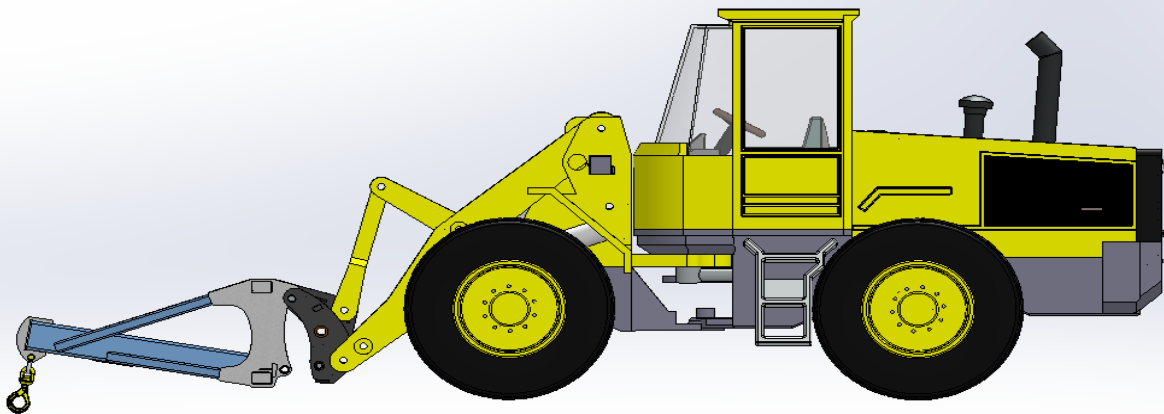


STEP 2

Check that locking pins are disengaged. Note: Models without indicators may need a physical check by the operator.

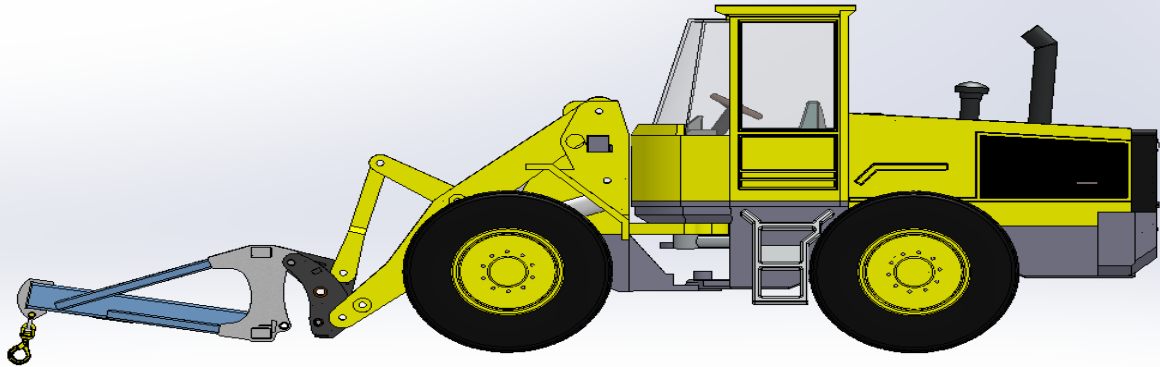
**STEP 3**

Slightly roll coupler forward to rest front of Lifting Jib on the ground as shown.

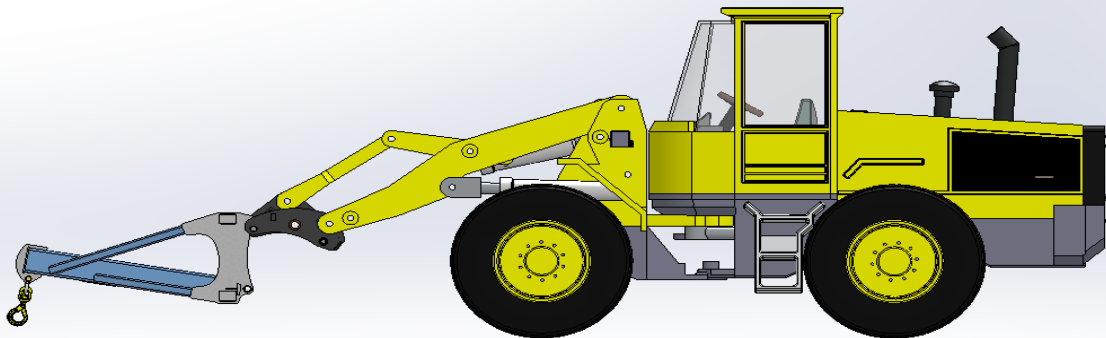


STEP 4

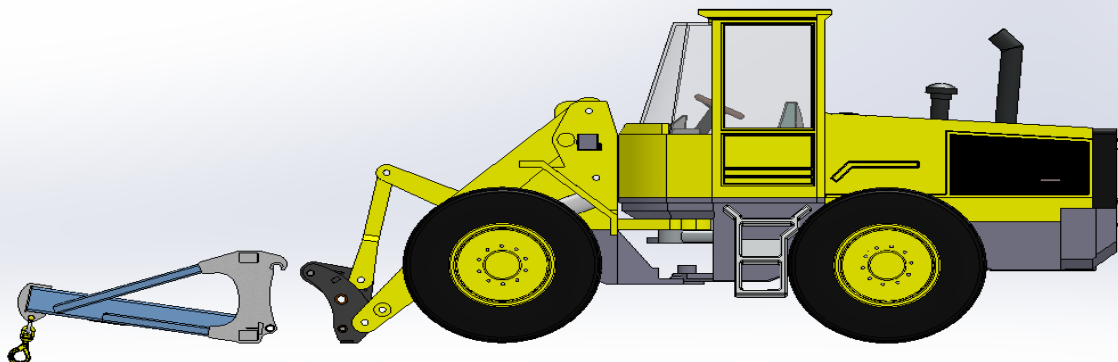
Lower loader arms until top pick-up bar becomes disengaged from quick coupler hooks



WARNING: NEVER ROLL COUPLER OVER AS SHOWN BEFORE DISENGAGING. *This will cause damage to attachment*

**STEP 5**

Reverse away from Lifting Jib.



Product Registration

Date of Delivery:	
Name:	
Company:	
Street Address:	
Phone Number:	
E-mail Address:	
Model Number:	
Serial Number:	
Sales Order Number:	

I confirm that the operator has read and understands the Operating Instruction and Warranty Terms and acknowledges this by signing the below.

X

DATE:/...../.....



Please email a completed copy to warranty@kerfab.com within 10 days of receipt of the Lifting Jib.

KERFAB WARRANTY STATEMENT

At Kerfab Industries, we take pride in delivering materials handling products that meet and exceed the highest industry standards. Our commitment to quality ensures that our products are engineered to conform to the stringent Australian Standards, providing customers with robust and reliable solutions for their needs. We stand behind the quality of our products and offer the following warranty provisions:

Warranty Terms:

- (1)** Kerfab warrants that our products shall be free from defects in material or workmanship for a period of **24 months** from the date of delivery to the purchasing customer.
- (2)** At our sole discretion, Kerfab may choose to replace or repair the product or any defective part thereof.
- (3)** This warranty is exclusively for the benefit of the named original customer and cannot be transferred or assigned.
- (4)** The warranty applies only to Kerfab products fitted or installed by Kerfab or our approved installers.
- (5)** Travel costs associated with assessing or repairing a Kerfab product covered under this manufacturer's warranty are not included.

Customer Responsibilities:

This warranty is subject to and conditional upon the strict compliance of our customers with the following responsibilities:

- (1)** Customers must notify Kerfab as soon as possible of any claims or circumstances that may give rise to a claim.
- (2)** Customers must provide Kerfab with details of the claim, along with any other information reasonably required to evaluate the claim.
- (3)** The product should not be used once a defect is apparent.
- (4)** It will be the customers financial responsibility to cover freight to return the attachment / component for assessment. Any claims that are then deemed warrantable the freight cost will be reimbursed.
- (5)** Repairs or attempts to repair the defect by any other party without prior written approval from Kerfab are not allowed.

Warranty Exclusions:

Not everything is covered by this warranty. The following exclusions apply:

- (1)** Mechanical failures due to a failure to comply with the service requirements as specified.
- (2)** Repairs required because of continued operation of the item once a defect or fault has occurred, including the loss of lubricants and coolant that results in consequential damage to associated components or systems.

(3) Consequential damage as a result of hydraulic fluid contamination to other components or system related ancillaries. This is not specific to but includes pumps, hoses, fittings, cylinders, valves and reservoirs.

(4) Damage resulting from impacts or road traffic accidents.

(5) Kerfab Industries are not responsible for any impact to business or financial loss due to the failure of an attachment or component.

This includes but it not limited to:

- personal liability
- work contract or agreement
- revenue or profit
- production
- increase to a business overhead cost

(6) Claims where damage to a covered component was caused by a non-covered component.

(7) Mechanical failures caused by misuse, neglect, abuse, negligence, lack of normal maintenance, improper servicing, or incorrect operation of the item as per the operations guide as determined by the Kerfab warranty administrator / supervisor.

(8) Ground Engaging Tools – Cutting Edge, Bucket Wraps, Teeth, Adapters

(9) Chassis and Wearing Components – Bruising on Coupler Chassis, Pins, Bush & Bearing wear, Spring Tensions or components considered a “wear and tear” item.

(10) Claims attributable to failure to follow the manufacturer’s operating guidelines or exceeding the manufacturer’s operating limitations.

(11) Claims where Kerfab has not been contacted before the commencement of repairs or repairs initiated without a Kerfab-issued work authorization number.

(12) Claims where the repair has not been performed by Kerfab, unless specifically authorised by Kerfab before the claim.

(13) Mechanical failures arising from unauthorised repairs.

(14) Mechanical failures attributed to modifications unless the modification has been endorsed by Kerfab in writing. Modified components must be disclosed in your warranty application and are expressly excluded from coverage.

(15) Failures caused by corrosion, electrolysis, fertiliser or rust.

(16) Tapping’s, threads, and fixing/fastening devices.

(17) Mechanical failures caused by a fault existing before the commencement of coverage.

(18) Use of the product for a purpose not specifically designed or intended by the manufacturer.

At Kerfab Industries, we are dedicated to providing you, with high-quality load handling products and support. This warranty statement reflects our commitment to ensuring your satisfaction and peace of mind from our dedicated aftersales team.