

Operation Manual

Hardwood Log Grab



Dear valued customer, we kindly ask that you carefully review the operating manual for your product and complete the product registration process to ensure that you are eligible for warranty coverage. Thank you for taking the time to follow these important steps to protect your investment.



+ 1800 818 079

+ kerfab.com.au

+ sales@kerfab.com

Kerfab
ATTACH+GO

CONTENTS

INTRODUCTION	2
OWNER INFORMATION	2
GENERAL INFORMATION	3
PLANT ASSESSMENT	4
HARDWOOD LOG GRAB FEATURES	4
RISK ASSESSMENT AND CONTROL	5
WORKSITE SAFETY	6
MAINTENANCE	6
GREASE POINT DIAGRAM	7
MONTHLY INSPECTION	8
SPARE PARTS	9
OPERATING INSTRUCTIONS	10
HYDRAULIC SUPPLY INSTALLATION INSTRUCTIONS	14
PRODUCT REGISTRATION	15
KERFAB WARRANTY STATEMENT	16





INTRODUCTION

Kerfab is a specialist manufacturer of a comprehensive range of attachments covering a wide spectrum of market sectors. The Hardwood Log Grab you have purchased is just one of a vast range of purpose-built products available in our range. Each attachment is engineered to relevant codes and standards along with input from experienced team which in turn provides you with an optimum item which will provide you with many years of service.

OWNER INFORMATION

Thank you for choosing to purchase a Hardwood Log Grab from Kerfab. To ensure maximum performance, it is mandatory that you study this operation manual to ensure your equipment continues to operate to maximum performance. Proper operation and maintenance are essential to prevent injury or damage and to maximise attachment life.

Continuous improvement is at the forefront of the Kerfab culture meaning that changes in product design may not be reflected in this document. Great care has been taken in preparing this document with accuracy however Kerfab does not assume any liability for errors or omissions.

	Potentially Fatal Danger
	Risk of Serious Injury
	Risk of Material Damage and/or Minor Injury
	Maintenance operation or Information

GENERAL INFORMATION

This operation manual was written to provide the owner/ operator instructions on the safe operation and maintenance of the Hardwood Log Grab Attachment.

PLEASE READ AND UNDERSTAND THE OPERATION AND MAINTENANCE OF YOUR HARDWOOD LOG GRAB BEFORE OPERATING YOUR KERFAB ATTACHMENT.

Kerfab Hardwood Log Grab are used on Wheel Loaders and needs to be a is a permanent part of your machine.

Attachment Inspection



All delivered products by Kerfab should be initially checked for any defects, damages or missing parts to ensure performance of attachment upon taking delivery of item.

Please notify Kerfab with a report of any problems within 10 business days.

Vital Point

Please keep this manual with the Machine once the attachment has been installed on the machine. The Operator should have a full understanding of full use of this attachment before use.

Attachment Features

The Kerfab Hardwood Log Grab has been designed in conjunction with the industry. Efficiency was of a top priority during the design process and the unique beak design enables excellent sorting capabilities. In addition, this attachment can hold single or multiple logs with ease. This is due to the unique optimally curved grappling arms which allows the logs to roll right up the inner surface of the beak. Most importantly, the Hardwood Log Grab, with its optimal curvature, can hold a full load regardless of how crooked the logs are. Its effortless movements, help ensure a higher level of productivity due to its convenience. Further more the beak has an opening range of 900mm to 1730mm. In other words, this is the perfect attachment for a wide range of jobs, both big and small. The Hardwood Log Grab, requires hydraulics when performing its everyday tasks.

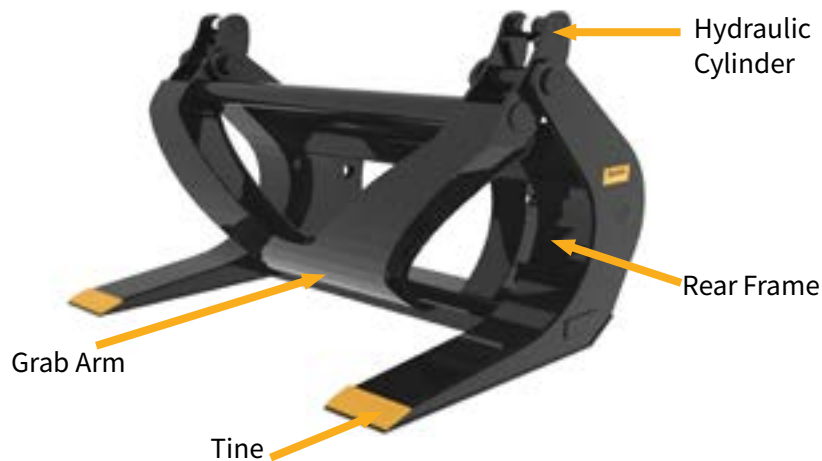
Plant Assessment

NB. This Plant Assessment ONLY applies to the attachment named below. It DOES NOT extend to other item(s) of plant that are used to operate this attachment















Plant Type:	Hardwood Log Grab
Specifications:	Refer to the Identification Plate on the Hardwood Log Grab for the specifications relevant to this attachment. The loads carried by the Hardwood Log Grab should NEVER EXCEED THE LOAD LIMIT OF THE HARDWOOD LOG GRAB OR THE LOAD LIMIT OF THE MOBILE PLANT it is attached to eg. Wheel loader, in the full scope of each mobile plant’s operations.
Description of Use:	The Hardwood Log Grab is designed to efficiently grasp and handle logs for the best on-site transportation and organisation of hardwood materials. Its unique beak design features stellar sorting capabilities. Optimal curvature of grappling arms effortlessly ensures a full load and a rounded bunch every time, regardless of how crooked the logs are. It should NOT be used for pulling loads sideways.








Hardwood Log Grab Features



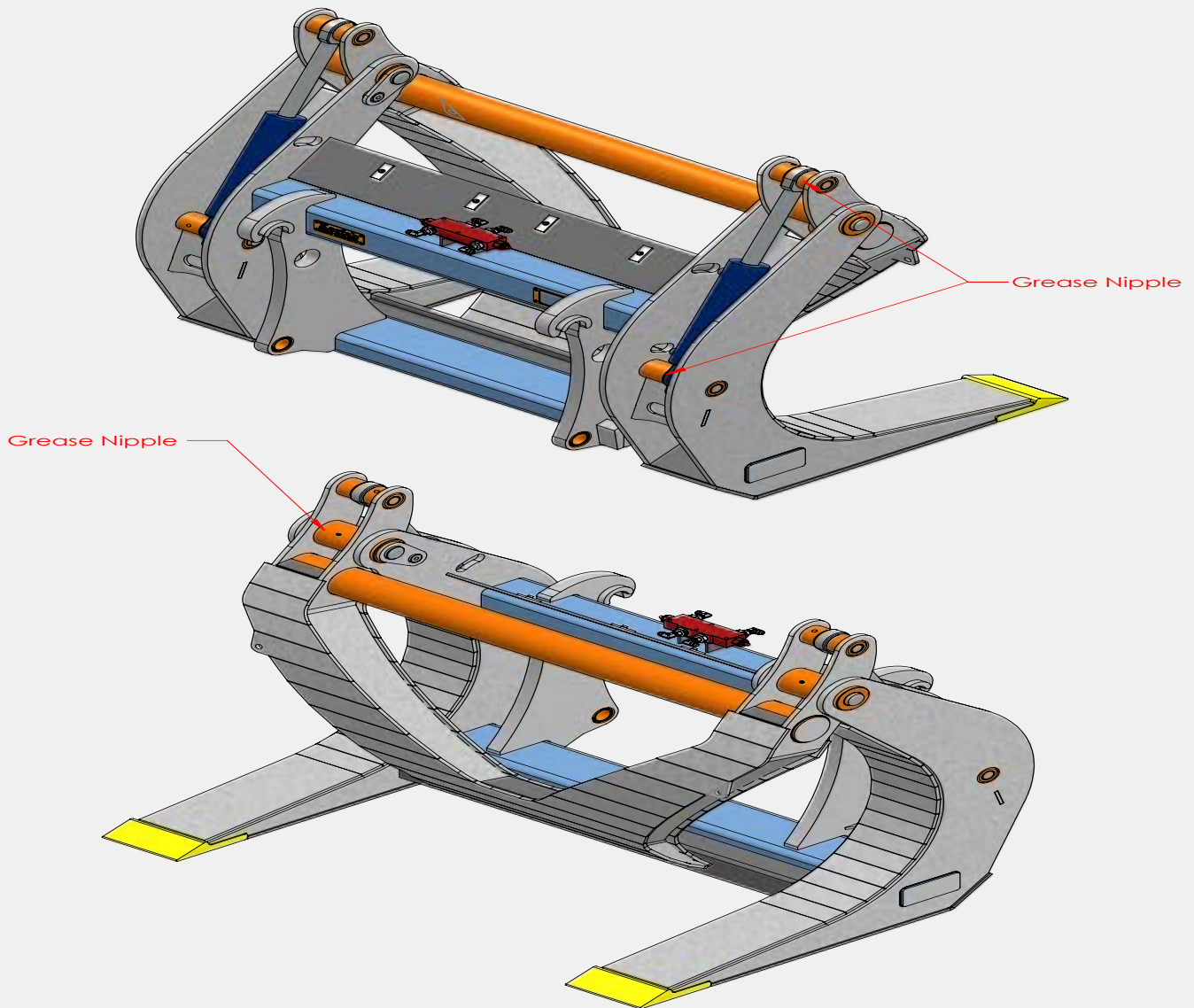
Risk Assessment and Control

Symbol	Risk	Control
 	<p>Body parts can be crushed between mobile plant mount and Hardwood Log Grab attachment points when connecting Hardwood Log Grab to the mobile plant mount.</p>	<p>Keep hands and body parts clear of area between Hardwood Log Grab attachment point and mobile plant mount.</p>
 	<p>Fingers may be jammed in locking pin points as locking pins are engaged.</p>	<p>Keep fingers clear when engaging locking pins into locking pin points at rear of Hardwood Log Grab.</p>
 	<p>Hydraulic fluid under pressure may cause injury if released while under pressure.</p>	<p>Ensure all hoses and connectors are in good working condition. Ensure all connections are secured and correctly sealed before using hydraulic controls.</p>
 	<p>Body parts can be crushed if Hardwood Log Grab unexpectedly releases from mobile plant mount.</p>	<p>Ensure Hardwood Log Grab is securely attached prior to use including fully engaging lower pins. Regularly check that hitch points on Hardwood Log Grab and also mobile plant mount parts are in good condition.</p>
 	<p>Moving grab arm can trap and crush body parts.</p>	<p>Keep hands and body parts clear of area between Hardwood Log Grab arm and base frame or load. Keep hands clear of area around upper ram pivot point and grab arm pivot points when opening or closing grab tines.</p>
 	<p>Body parts can be crushed by unexpected release or movement of load.</p>	<p>Ensure larger material is tightly secured in Hardwood Log Grab prior to lifting. Regularly check Hardwood Log Grab for damaged or bent/distorted parts and damaged welds.</p>
 	<p>Body parts can be crushed by unexpected tipping of Hardwood Log Grab.</p>	<p>Ensure Hardwood Log Grab is stable when released from mobile plant mount. Use stable chocks to support rear frame if necessary.</p>

<h2 style="margin: 0;">Worksite Saftey</h2> 	
	<ul style="list-style-type: none"> All people involved in the operation are to wear appropriate personal protective equipment which may include eye protection, hearing protection, gloves, protective footwear, and high visibility clothing/vests.
	<ul style="list-style-type: none"> Hardwood Log Grab should ONLY be operated by a trained and experienced operator or an operator under direct supervision.
	<ul style="list-style-type: none"> Person/s should NOT enter the work area or sweep the area of attachment and load unless under the direction of the operator.
	<ul style="list-style-type: none"> NEVER walk under the Hardwood Log Grab or load.
	<ul style="list-style-type: none"> NEVER elevate Hardwood Log Grab or load above or in the direct proximity to people.
	<ul style="list-style-type: none"> Ensure all persons are clear of Hardwood Log Grab when it is being hitched or released.
	<ul style="list-style-type: none"> Ensure Hardwood Log Grab is as low as possible when traveling.

<h2 style="margin: 0;">Maintenance</h2>		
	Check hydraulic hoses, connections, and ram seals for damage and/or leaks.	
	Check the Hardwood Log Grab arms/ram pivot point and Hardwood Log Grab swivel point for damage and wear.	
	Check all tines, grab arms, and rear frame for damage or bends/distortions.	
	Check all welds for damage or cracks.	
<p>DO NOT USE THE HARDWOOD LOG GRAB IF WEAR OR DAMAGE MAKES THE USE OF THE HARDWOOD LOG GRAB HAZARDOUS</p>		

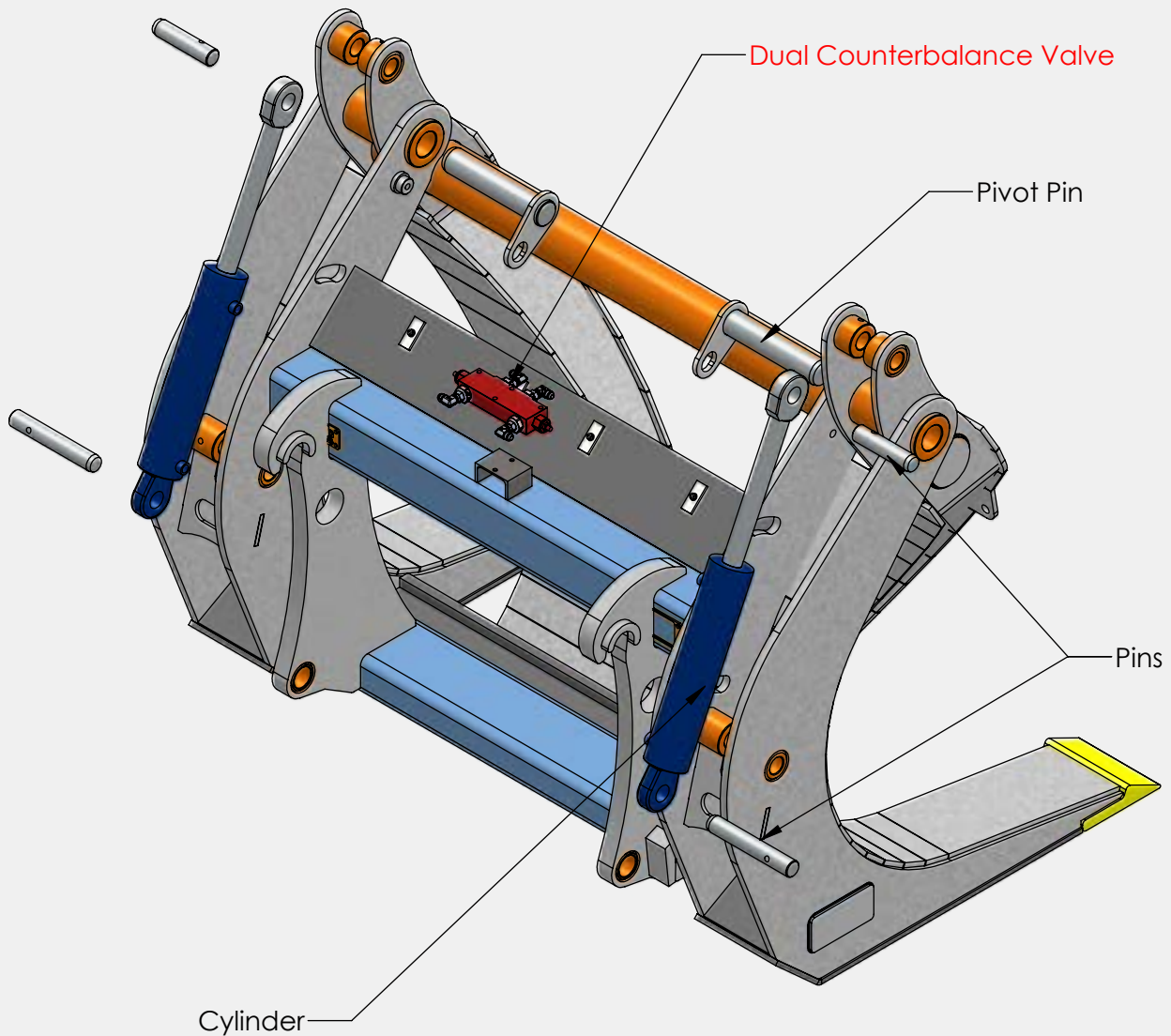
GREASE POINT DIAGRAM



- Ensure the unit is greased via grease nipples as shown.
- Ensure that the attachment is greased every 12Hr of use

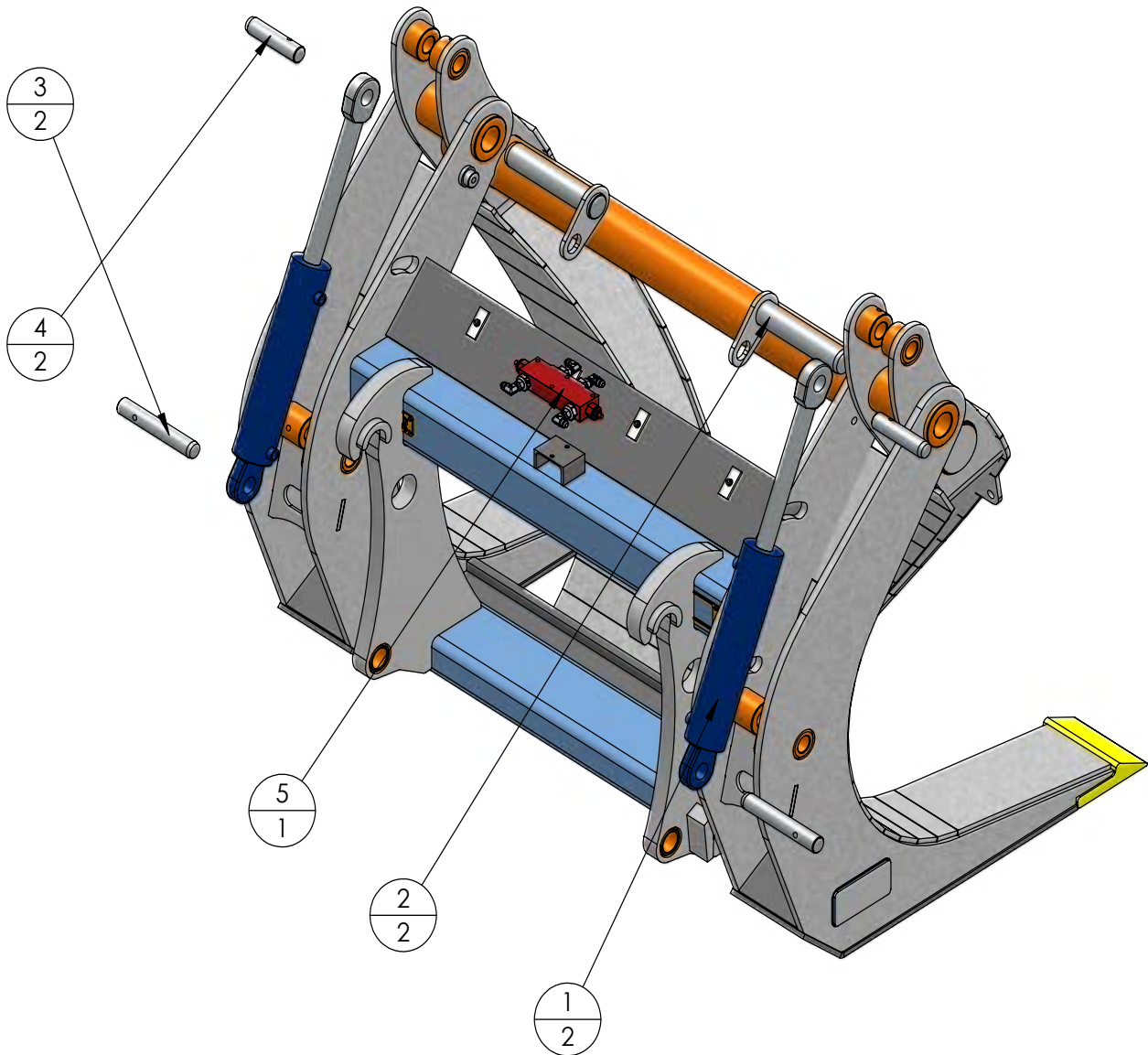


MONTHLY INSPECTION



1. Inspect cylinder and hoses for wear and are free from hydraulic oil leaks.
2. Inspect cylinder pins for wear.
3. Inspect frame runners for wear or distortion
4. Check all welds for damage or cracks

SPARE PARTS



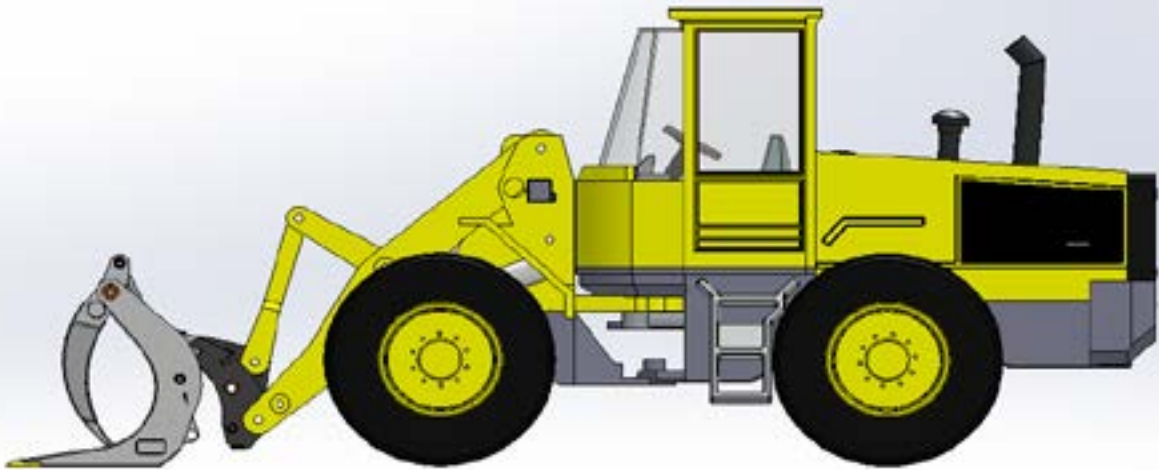
NO.	DESCRIPTION	QTY
1	CYLINDER	2
2	PIVOT PIN	2
3	LOWER RAM PIN	2
4	UPPER RAM PIN	4
5	DUAL COUNTER BALANCE VALVE	1

OPERATING INSTRUCTIONS

ENGAGING IMPLEMENT STEPS

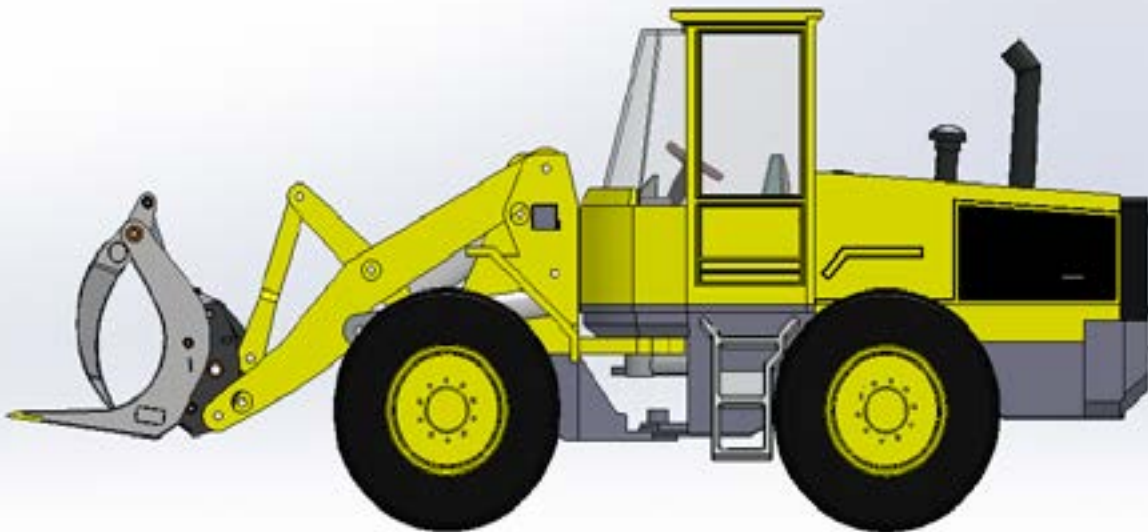
STEP 1

Approach Hardwood Log Grab with top pick-up bar in sight and aligned with quick hitch hooks.



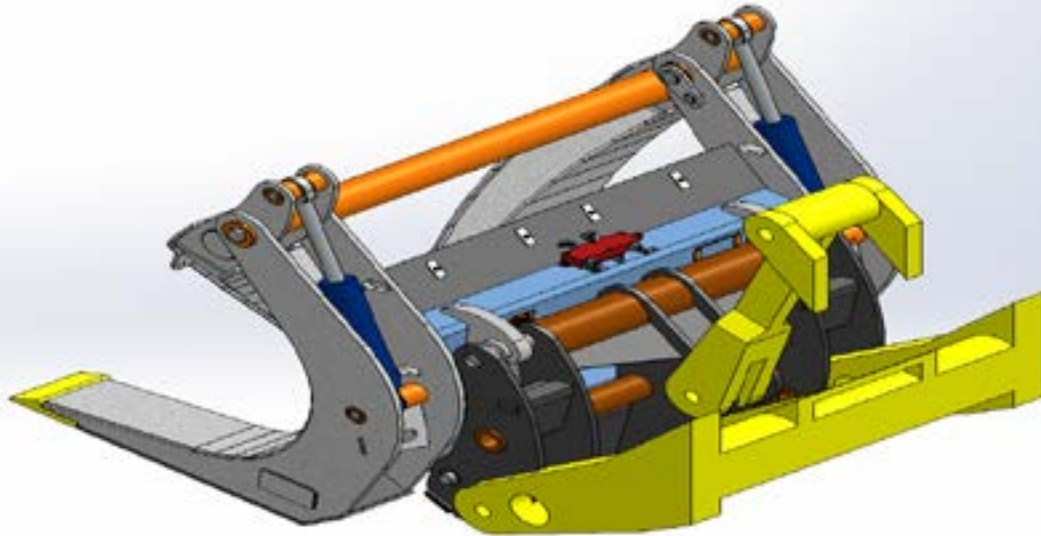
STEP 2

Engage top bar with hook by raising loader arms. Roll Hardwood Log Grab back to ensure hook stopper is resting against the coupler. Engage quick coupler locking pins.



STEP 3

Check that locking pins are engaged by view indicators. Note: Models with no indicators will require a physical check by the operator

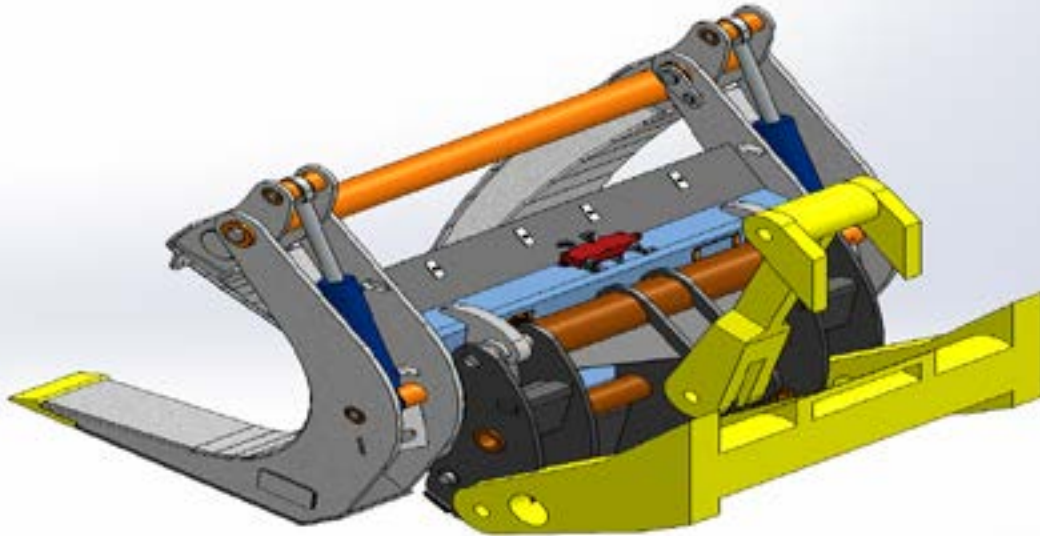
**DISENGAGING IMPLEMENT STEPS****STEP 1**

Slightly roll back implement to ensure hook bump stops are resting against the quick coupler. Disengage locking pins.

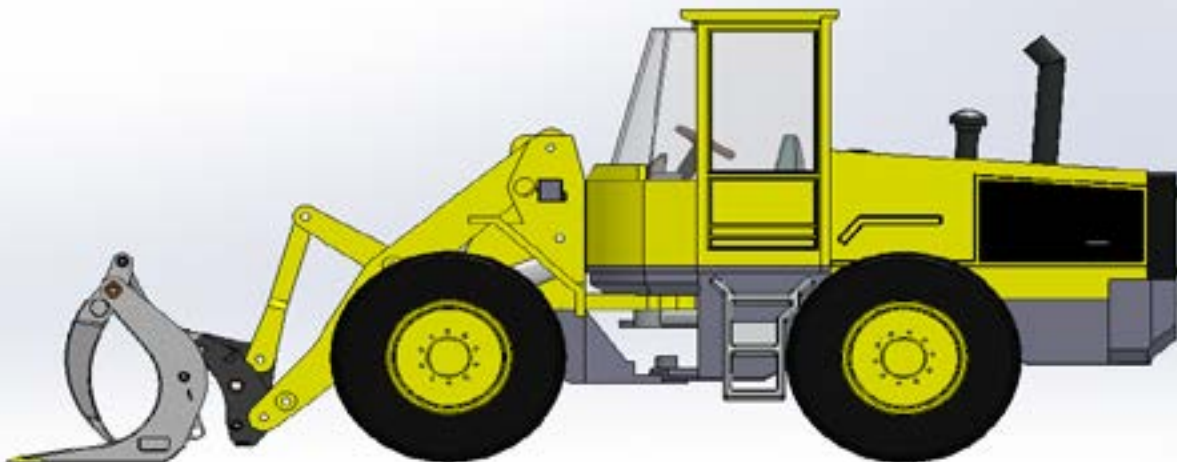


STEP 2

Check that locking pins are disengaged. Note: Models without indicators may need a physical check by the operator.

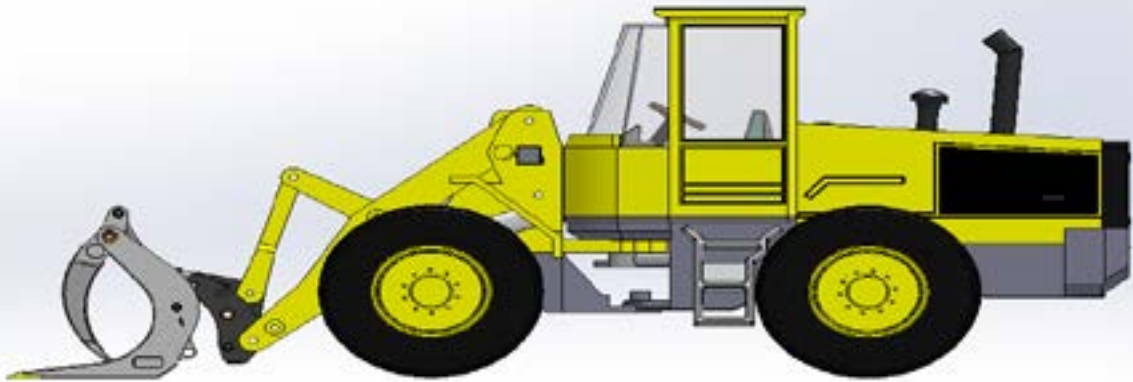
**STEP 3**

Slightly roll coupler forward to rest front of Hardwood Log Grab on the ground as shown.

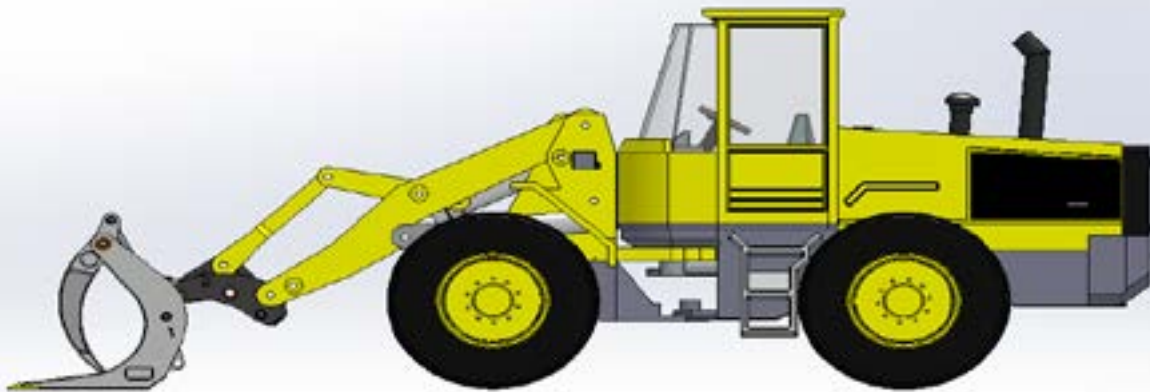


STEP 4

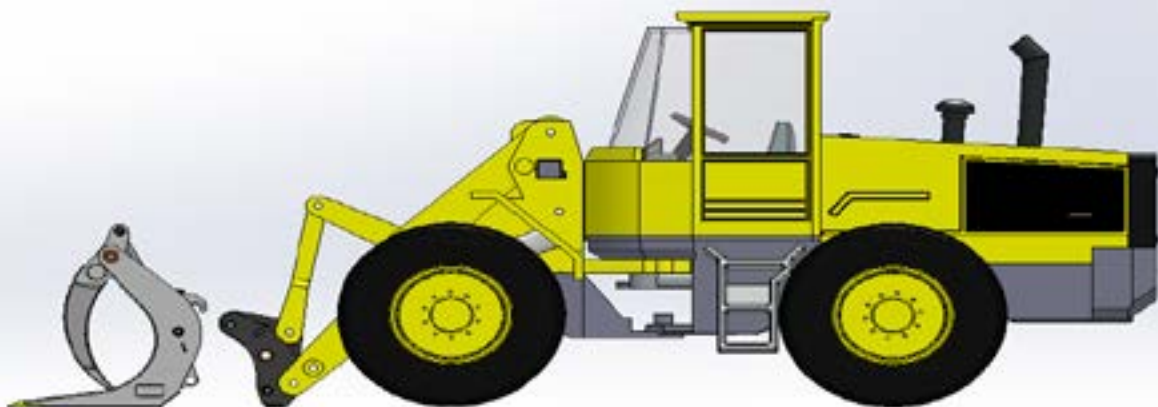
Lower loader arms until top pick-up bar becomes disengaged from quick coupler hooks



WARNING: NEVER ROLL COUPLER OVER AS SHOWN BEFORE DISENGAGING. *This will cause damage to attachment*

**STEP 5**

Reverse away from Hardwood Log Grab.



HYDRAULIC SUPPLY INSTALLATION INSTRUCTIONS

1. Each Hardwood Log Grab comes with provisions to connect the hydraulic supply.
2. Connect hoses from Hardwood Log Grab to the machine. Ensure all hoses are tight and routed correctly to ensure hoses are not damaged while the implement is in use.



Product Registration

Date of Delivery:	
Name:	
Company:	
Street Address:	
Phone Number:	
E-mail Address:	
Model Number:	
Serial Number:	
Sales Order Number:	

I confirm that the operator has read and understands the Operating Instruction and Warranty Terms and acknowledges this by signing the below.

X

DATE:/...../.....



Please email a completed copy to warranty@kerfab.com within 10 days of receipt of the Hardwood Log Grab.

KERFAB WARRANTY STATEMENT

KERFAB load handling products have been designed and manufactured to the highest of industry standards.

The products have been engineered to conform to the Australian Standards and customers can be assured of a robust and reliable product.

In the event of defect or failure Kerfab Industries Warrant their products in accordance with the following Warranty provisions:

Warranty Terms: Extended Option

(i) Kerfab warrants the product shall be free from defects of material or workmanship for a period of **24 months** from the date of delivery to the customer.

(ii) Kerfab may, at its sole discretion either replace or repair the product or any part thereof which may be defective.

(iii) This warranty is exclusively for the benefit of the named original customer and is not capable of being transferred or assigned without the consent of the manufacturer prior to any purported transfer.

(iv) The warranty shall apply to only Kerfab products fitted or installed by Kerfab or their approved installer's.

(v) The warranty does not cover any costs related to travel to site to assess or repair a Kerfab product that falls within the above mentioned manufacturer's warranty terms.

Customer Responsibilities:

The warranty is subject to and conditional upon strict compliance by the customers with the following responsibilities:

(i) The customer shall notify Kerfab as soon as practicable of the claim or circumstances which may give rise to a claim.

(ii) The customer shall provide Kerfab with details of the claim together with any such other information reasonably required to determine the claim.

(iii) The customer will not continue to use the product once the defect is apparent.

(iv) The customer will be responsible for all freight costs.

(v) The customer will not repair or attempt to have repaired by any other party, the defect, without the prior approval in writing of Kerfab.

Warranty exclusions;

Not everything is covered by this warranty, the exclusions are:

- (i)** Any mechanical failure attributable to the failure to comply with the service requirements as required.
- (ii)** Any repairs required as a result of continued operation of the item once defect or fault has occurred (including loss of lubricants and coolant).
- (iii)** Damage attributable to impact or Any collision, accidental or otherwise.
- (iv)** Any consequential loss, damage or liability incurred as result of a mechanical failure (including personal liability).
- (v)** Any claim where damage to a covered component was caused or contributed to by a non-covered component.
- (vi)** Any mechanical failure caused by misuse, neglect, abuse, negligence and/or lack of normal maintenance, improper servicing and/or any failure caused by the incorrect operation of the item generally, and/or in accordance with operations guide, or any use not intended or recommended by the manufacturer.
- (vii)** Any claim attributable to failure to follow the manufacturer's operating guide lines or failure attributable to exceeding the manufacturers operating limitations.
- (viii)** Any claims where we have not been contacted prior to the commencement of repair or repairs and/or where we have not issued a work authorization number.
- (ix)** Any claim where the repair has not been performed by us, unless authorized by us prior to claim.
- (x)** Any claim arising from any failure caused by unauthorized repairs.
- (xi)** Any mechanical failure attributed to a modification made, unless such modification has been endorsed by us in writing. Modified components must be disclosed on your warranty application and are expressly excluded from coverage.
- (xii)** Failure caused by corrosion, electrolysis or rust or any other event or occurrence arising out of or as consequence of any specific use made by the operator beyond recommendations, capacity or intended purpose of the manufacturer.
- (xiii)** Any tapings, threads and/or fixing and fastening devices.
- (xiv)** Any failure caused by a fault that existed prior to the commencement of cover.
- (xv)** Used for a purpose for which it was not specifically designed or intended by the Manufacturer.