

# Wheel Loader General Purpose Bucket

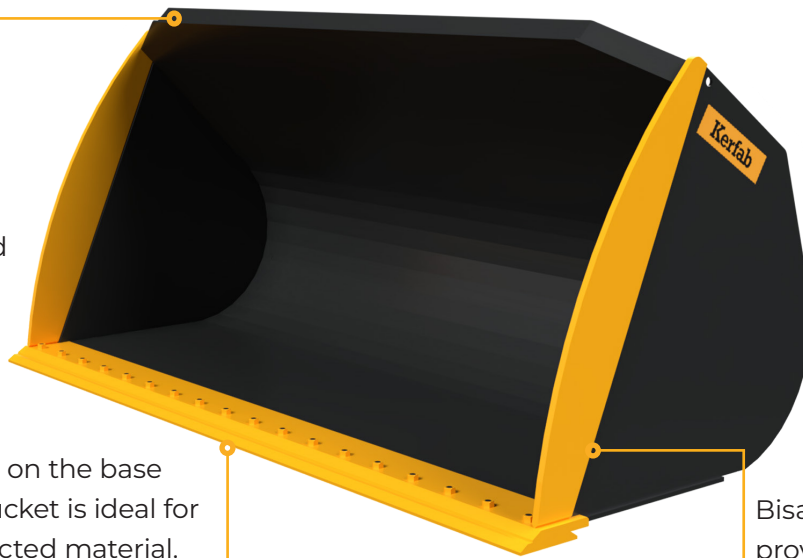
The General Purpose Bucket is built to handle loose material and aggregate such as fertiliser, rubble, dry sand, silage, manure and other materials with a density up to 1600kg/m<sup>3</sup>. Aside from routine tasks, this attachment can also be used for general clean up applications. We manufacture two styles for wheel loaders - Heavy Duty and Compact.

## Key features at a glance:

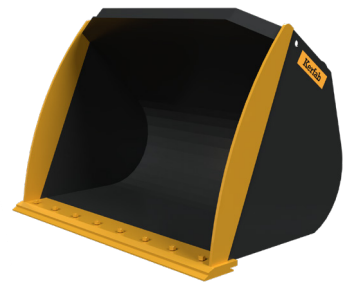
- ▶ Versatile all-rounder attachment for everyday material-handling tasks.
- ▶ Bolt-on or weld-on cutting edge options.
- ▶ More durable than a light material bucket and can withstand harsher applications.
- ▶ Various widths and capacities available to match your machine and workload.
- ▶ Manufactured from high grade steel for guaranteed durability.
- ▶ Compatible with most wheel loader makes and models.



Optional extras can be fitted to improve suitability for various applications including wear plates, internal liners, trash guards and coatings.



Teeth (optional) on the base edge of your bucket is ideal for digging compacted material.



▲ Compact Design

◀ Heavy Duty Design

Bisalloy 400 steel side edges provide optimal strength and longevity.

## Specifications:

Part Number	Width mm	Heaped Capacity m <sup>3</sup>	Style
WBU.GC1205	1200	0.5	Compact
WBU.GC1210	1200	1	Compact
WBU.GC1505	1500	0.5	Compact
WBU.GC1810	1800	1	Compact
WBU.GP2420	2400	2	Heavy Duty
WBU.GP2525	2490	2.5	Heavy Duty
WBU.GP2727	2700	2.7	Heavy Duty
WBU.GP2730	2700	3	Heavy Duty
WBU.GP3035	3000	3.5	Heavy Duty
WBU.GP3040	3000	4	Heavy Duty



Visit our website